

Job Name:	Date:
System Reference:	



OUTDOOR VRF SYSTEM

UNIT OPTION

- Standard Model..... PUMY-P36NKMU1
- Seacoast (BS) model PUMY-P36NKMU1-BS

ACCESSORIES

- Joint Kit For details see Pipe Accessories Submittal
 - Header Kit For details see Pipe Accessories Submittal
 - Air Outlet Guide (One Piece)**..... PAC-SH96SG-E
 - Front Wind Baffle (One Piece)**..... WB-PA3
 - Drain Pan..... PAC-SH97DP-E
 - Drain Socket..... PAC-SG61DS-E
 - Base Pan Heater..... PAC-SJ20BH-E
 - Air Deflector Vertical..... ADV-1
- **PUMY requires two outlet guides and wind baffles for installation.

Specifications		Model Name
Unit Type	PUMY-P36NKMU1 (-BS)	
Nominal Cooling Capacity (208/230V) ^{*1}	Btu/h	36,000
Nominal Heating Capacity (208/230V) ^{*2}	Btu/h	42,000
Operating Temperature Range	Cooling (Outdoor)	5° to 115° F (-15 to +46° C) DB ^{*3 *4}
	Heating (Outdoor)	-13° to +59° F (-25° to +15.0° C) WB
External Dimensions (H x W x D)	In. / mm	52-11/16 x 41-11/32 x 13 (+1) / 1338 x 1050 x 330 (+25)
Net Weight	Lbs. / kg	269 / 122
External Finish	Galvanized steel sheets (+powder coating for -BS type)	
Electrical Power Requirements	Voltage, Phase, Hertz	208/230V, 1-Phase, 60Hz
Minimum Circuit Ampacity (MCA)	A	31
Maximum Overcurrent Protection (MOP)	A	44
Recommended Fuse Size	A	40
Piping Diameter (Flare) In. / mm	Liquid (High Pressure)	3/8 / 9.52
	Gas (Low Pressure)	5/8 / 15.88
Indoor Unit	Total Capacity	50% to 130% of outdoor unit capacity
	Model / Quantity	P6 to 36 / 1 to 7
Fan Type x Quantity	Propeller fan x 2	
Fan Motor Output	kW	0.074 + 0.074 (two fan motors)
Airflow Rate	CFM	3,885
Compressor Operating Range	Cooling	29% to 100%
	Heating	24% to 100%
Compressor Type x Quantity	INVERTER-driven Scroll Hermetic x 1	
Compressor Motor Output	kW	2.8
Sound Pressure Level	Cooling	49
	Heating	53
Refrigerant	R410A; 10 lbs. + 9 oz. (4.8 kg)	
Lubricant	FV50S (2.3 liters)	
Protection Devices	High Pressure	High pressure sensor, High pressure switch 601 psi (4.15 MPa)
	Inverter Circuit	Over-heat protection, Over-current protection
	Compressor	Discharge thermo protection, Over-current protection
AHRI Ratings (Ducted/Non-Ducted)	EER	12.6 / 14.2
	SEER	15.6 / 21.0
	COP	3.6 / 3.9
	HSPF	10.5 / 11.5

*1 Cooling | Indoor: 80° F (26.7° C) DB / 67° F (19° C) WB; Outdoor: 95° F (35° C) DB

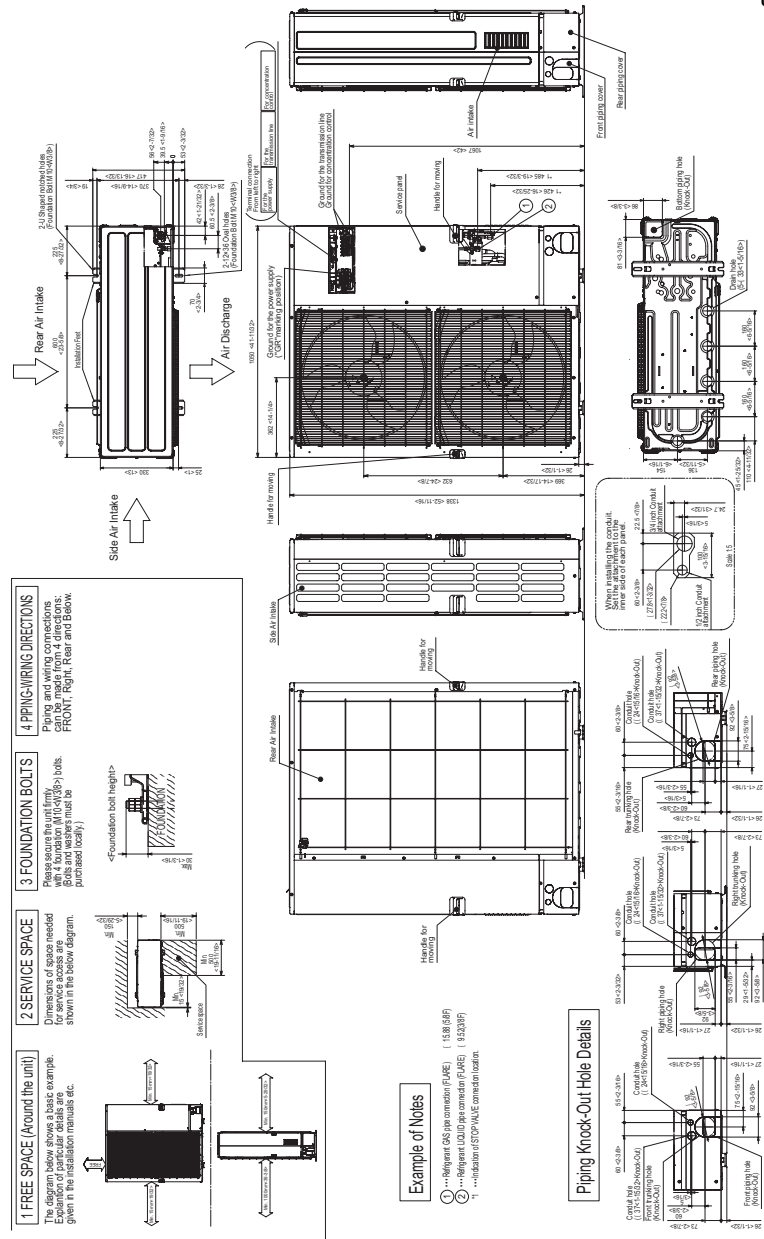
*2 Heating | Indoor: 70° F (21.1° C) DB, Outdoor 47° F (8.3° C) DB / 43° F (6° C) WB

*3 When using Wind Baffles [WB-PA3], the minimum operating range is 5° F. Without Wind Baffles, the minimum operating range is 23° F.

*4 When connecting PKFY-P06NBMU/P08NHMU, PFFY-P06/08/12NEMU or PFFY-P06/08/12NRMU indoor units, the minimum operating range is 50° F.

Model:PUMY-P36NKMU1 (-BS)- DIMENSIONS

Unit: mm
<in>



NOTES

Blue Fin Anti-corrosion Protection:
Cellulose- and polyurethane-resin coating treatment applied to condenser coil that protects it from air contaminants.
Standard: $\geq 1\mu\text{m}$ thick; Salt Spray Test Method - no unusual rust development to 960 hours.



COOLING & HEATING

1340 Satellite Boulevard, Suwanee, GA 30024
Toll Free: 800-433-4822 www.mehvac.com

