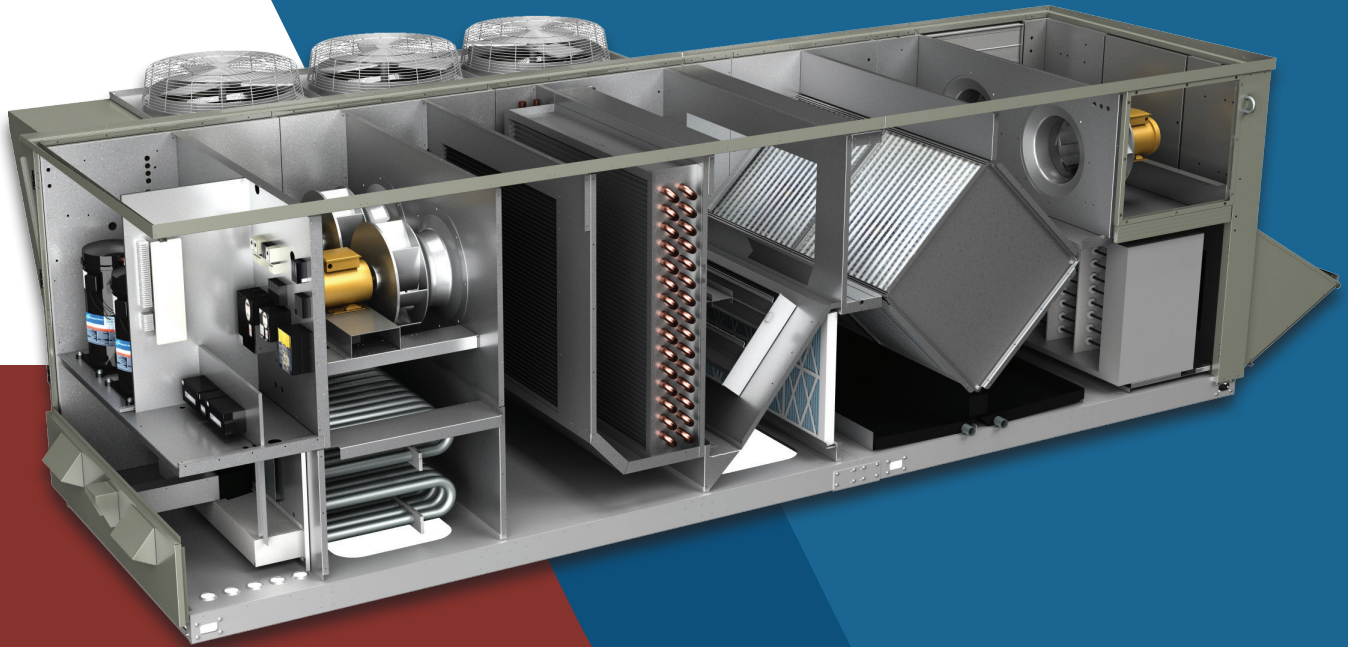




**OUTDOOR AIR EXPERTS**  
**ROBUST DESIGNS**  
**DEDICATED SUPPORT**



# THE VALUE OF VALENT

## ROBUST DESIGNS, AFFORDABLE QUALITY

Valent designs and manufactures dedicated outdoor air handling units that require robust cabinets and components to effectively condition 100% outdoor air — on the coldest winter day or the most humid summer day.

Efficient manufacturing allows Valent to provide affordable products while raising the bar on quality.

**Valent's goal is to provide customers with affordable quality.**

## OUTDOOR AIR EXPERTISE BUILT INTO EVERY PRODUCT

Valent's fully integrated and interoperable controls ensure reliable and efficient performance. We've applied our years of applications knowledge to create flexible control sequences proven across thousands of high outdoor air installations.

Valent's energy recovery portfolio is diverse to meet most project requirements. We understand application subtleties, like boosting efficiency with energy wheels that modulate to address changing outdoor conditions, or enthalpic plate heat exchangers that recover latent energy with no moving parts.

**Controls and energy recovery expertise are key to optimal DOAS performance.**

## DEDICATED SUPPORT

We work with experienced reps and their talented sales engineers across North America. Our reps partner with Valent sales and support engineers to add value during design, installation, and operation phases.

**Before and after the sale, we're there when you need us.**



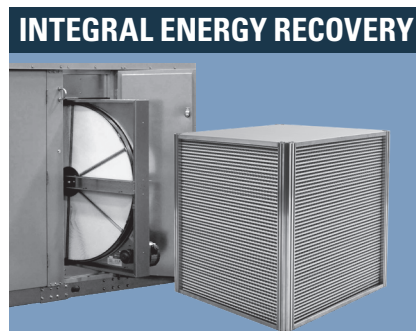
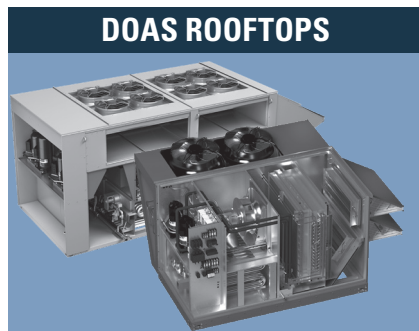
# VALENT PRODUCTS

## CONDITION UP TO 100% OUTDOOR AIR

All Valent units are designed to cool, heat, and dehumidify a wide range of entering air loads, up to 100% outdoor air. Valent units are also used in mixed air applications due to their value-added features, which include inverter scroll compressors, ultra-quiet condensing fans, and durable components.

## THREE CONFIGURATION TYPES

Valent units can be configured as DOAS rooftop units, with or without integral energy recovery, and as a split system. See the tables in this brochure for capacities. See the **Valent Datasheet** for product specifications by model.



## NUMEROUS COMBINATIONS



# RELY ON VALENT

## PREDICTABLE PERFORMANCE



### EVERY UNIT FACTORY-TESTED

A full factory run test ensures operation at start-up. Compressors and mechanical component operation are verified and VFD drives are factory-programmed.

**Factory testing ensures operation at start-up.**

### EASY, EFFICIENT CONTROLS

Pre-configured control sequences, embedded web user interface, seamless interoperability, and on-screen refrigeration detail provide easy and reliable unit control.

**Pre-configured controls shorten start-up time.**

## EASY INSTALLATION

### SHORT LEAD TIMES

Lead times average six weeks, with 98% on-time shipping. Valent production capacity in four locations means lead times are short, even in high-demand seasons.

**Quick delivery you can count on.**

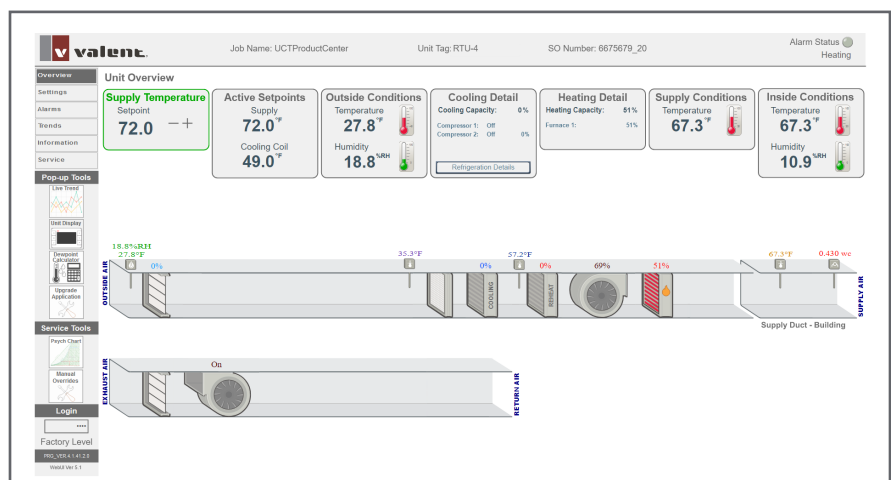
### SIMPLE STARTUPS

It doesn't get much easier than our three-step installation:

- 1. Inspect.** Check curb, utility connections, sensors.
- 2. Enable** the unit from the keypad.
- 3. Adjust** set points, gas pressure, tune cooling.



**Save time with Valent's Web UI, standard on all units.** View or modify multiple data points on each intuitively-organized web page, which is much faster than scrolling through handheld keypad screens.

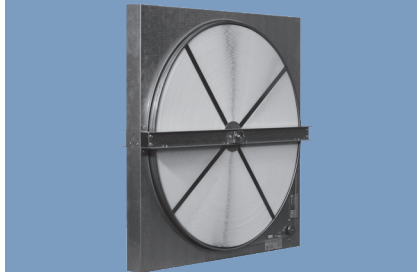




# VALENT OPTIONS

## ENERGY RECOVERY OPTIONS

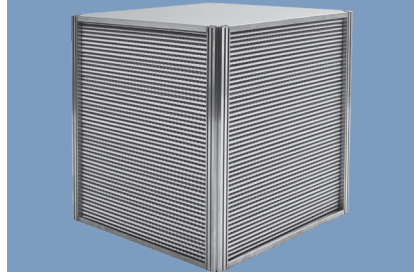
### ENTHALPY WHEELS



- Latent and sensible recovery
- Most efficient
- AHRI 1060 certified

Valent's rotating enthalpy wheels recover up to 70% of return-air energy and slide out for easy access. Two enthalpy wheel types are available: a lightweight polymer wheel with silica gel desiccant, and an aluminum wheel with molecular sieve media.

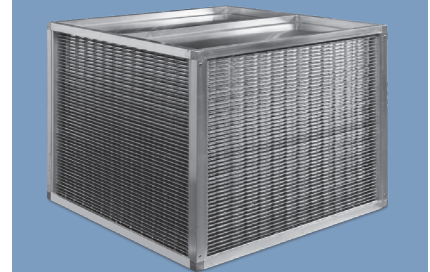
### ENTHALPIC PLATE



- Latent and sensible recovery
- No moving parts
- Water-washable

Valent's enthalpic plate heat exchangers have minimal maintenance requirements, an exhaust air transfer ratio (EATR) of less than 1%, and can safely handle accumulated condensate without sustaining frost damage.

### SENSIBLE PLATE



- Sensible energy recovery
- No moving parts
- All-aluminum construction

Valent's sensible plate heat exchangers allow minimal cross-air leakage, have a low pressure drop, and are easily cleanable. Commonly used in dry climates, they are also effective in high-humidity spaces such as pools, or where cross-contamination is a concern.

## COOLING, HEATING, CONTROL, CONSTRUCTION OPTIONS

### COOLING CAPACITY

- 3–70 tons

### COOLING OPTIONS

- Packaged or split, air-cooled
- Water source heat pump
- Air source heat pump
- Chilled water
- Inverter or digital scroll compressors
- Modulating hot gas reheat
- Modulating EC condensing fans
- Staged AC condensing fans

### AIRFLOW CAPACITY

- 500–18,000 cfm

### HEATING OPTIONS

- Indirect gas 75–1,200 MBh
- Up to 16:1 turndown furnaces
- Electric 5–200 kW
- Temperator
- Hot water
- Steam coil

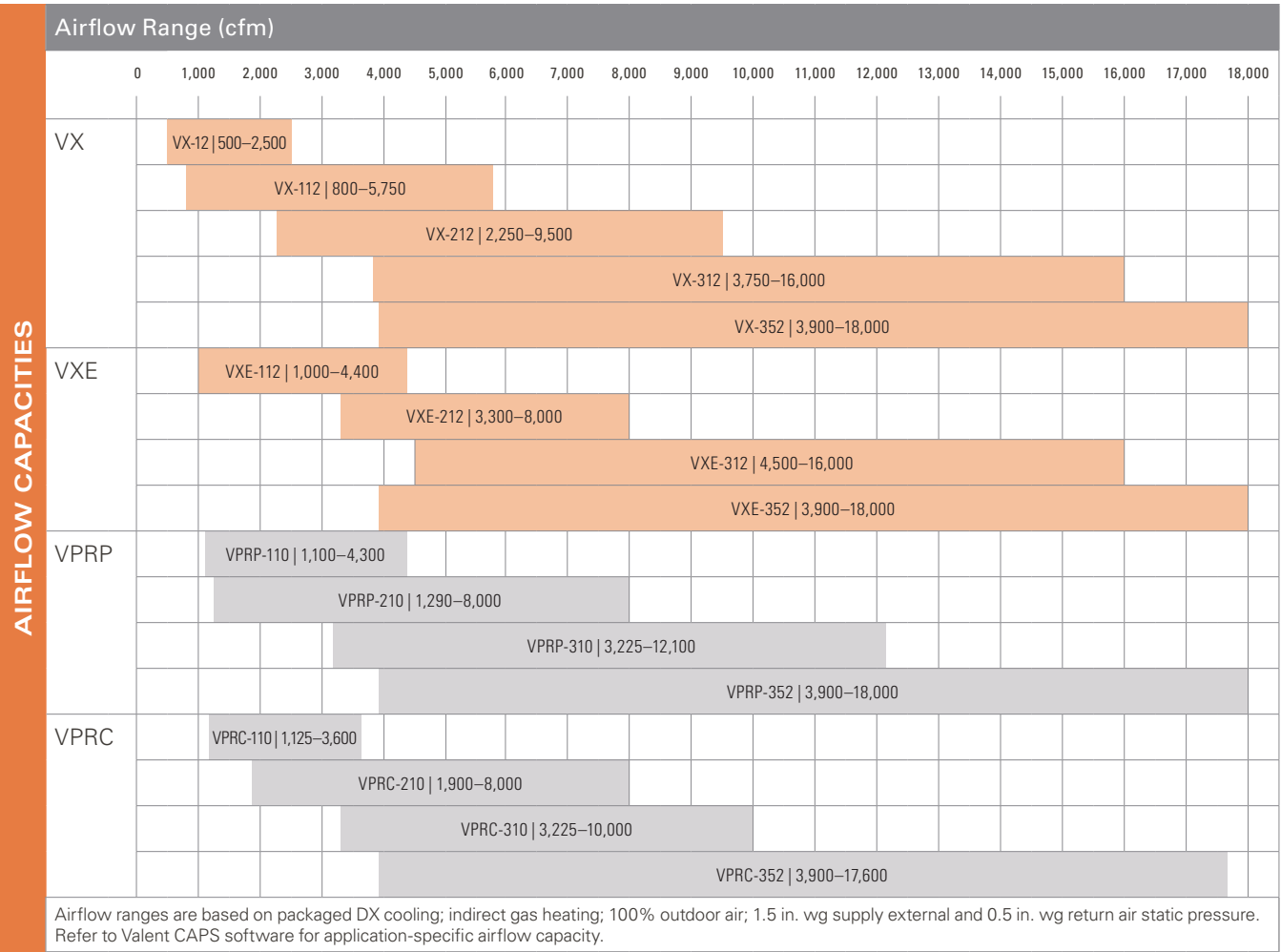
### CONTROL OPTIONS

- Full control
- Heat-cool only control

### CONSTRUCTION

- 2" R-13 foam-injected insulated panels, floors, doors, and roof
- Multiple access doors with rugged handles
- Internal space for maintenance access
- Pre-painted casing
- Sloped roof
- Galvanized interior
- Multiple duct connections

# PRODUCT DATA



## PRODUCT DATA

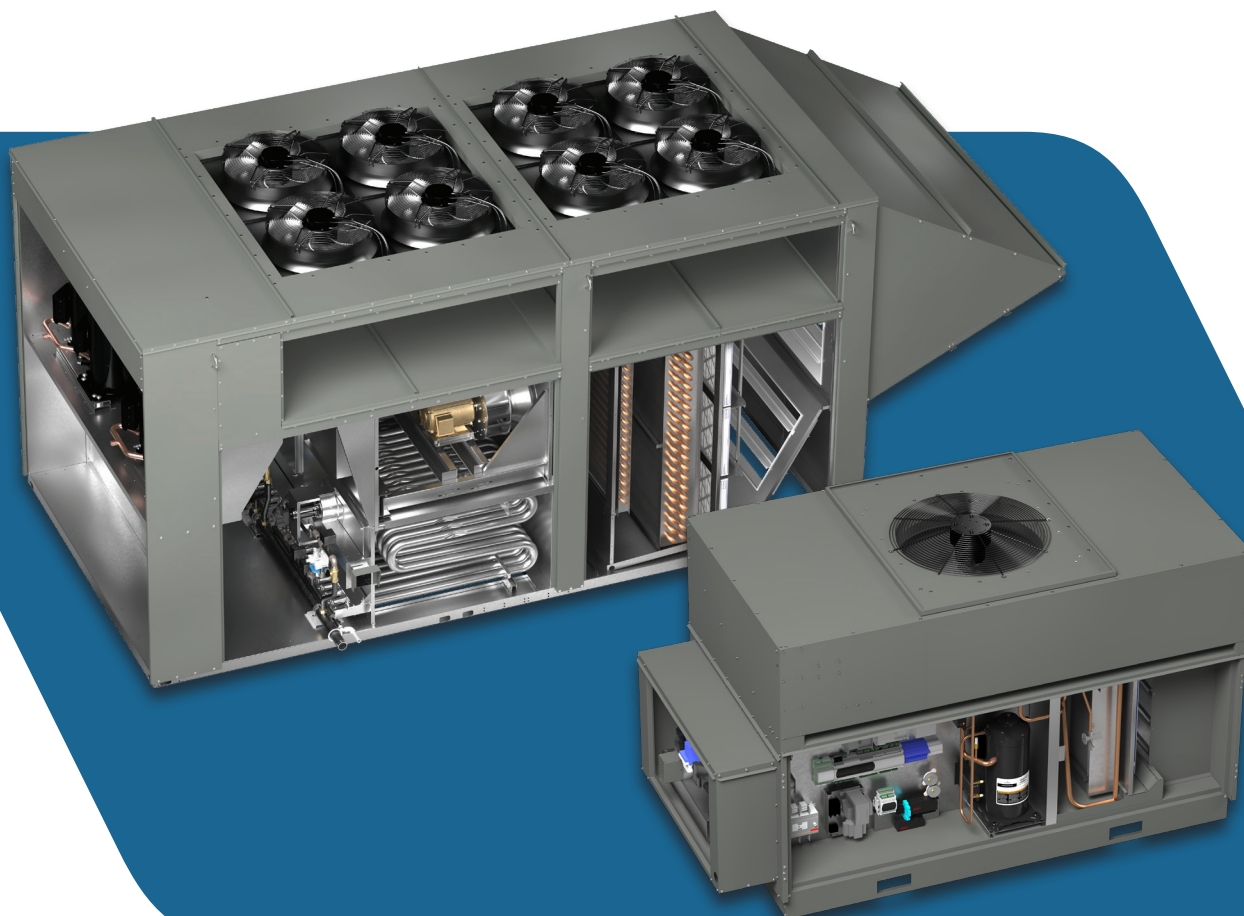
REFRIGERATION CAPACITIES		Tonnage																			
		3	4	5	6	7	8	10	13	15	16	18	20	25	30	35	40	50	60	70	
	Packaged Air Cooled	VX-12																			
				VX/E-112																	
											VX/E-212										
														VX/E-312							
														VX/E-352							
	Split Air Cooled	VX/E-112										VX/E-212									
	Water Source Heat Pump	VPRX/E/P/C-110																			
								VPRX/E/P/C-210													
														VPRX/E/P/C-310							
															VPRX/E/P/C-352						
	Air Source Heat Pump	VX/E-112										VX/E-212									
VPRP and VPRC available with packaged DX or WSHP cooling.																					

HEATING CAPACITIES

Indirect Gas	Input Capacity (MBh)																				
	75	100	150	200	250	300	400	500	600	700	800	1,000	1,200								
	VX-12																				
		VX/E-112																			
							VX/E-212														
											VX/E-312										
											VX/E-352										
SCR Electric	Electric Capacity (kW)																				
	5	10	15	20	30	35	40	50	60	80	90	100	120	125	150	180	200	240			
	VX-12																				
			VX/E-112																		
							VX/E-212														
							VX/E-312														
										VX/E-352											
VPRP and VPRC available with gas, electric or WSHP heating VPR, VPRX, VPRE only available with WSHP heating Electric heat sizes shown do not account for unit voltage.																					

VALENT OFFERS A WIDE CAPACITY RANGE

3-70 TONS COOLING, 500-18,000 CFM AIRFLOW



Shown here: Valent VX-352 , Valent VX-12

On the cover: Valent VPRC-210

## LEARN MORE

- Visit our website at **valentair.com**.
- Download our **Valent Datasheet** for detailed specifications by model.
- Find a **Valent Representative**.



OUTDOOR AIR EXPERTS | ROBUST DESIGNS | DEDICATED SUPPORT

[valentair.com](http://valentair.com)

Valent Cat 032921