



The new degree of comfort.®

# SOLUTIONS

## FOR EVERY INDUSTRY



Office  
School  
Restaurant  
Health Care  
Retail

### COMMERCIAL SERIES

Package Equipment: 3-25 Ton Models  
Split Systems: 3-20 Ton Models





**OUR HISTORY**

Rheem® Manufacturing Company was established in the mid-1920s when brothers Richard and Donald Rheem acquired a galvanizing plant in San Francisco, California. In the 1930s, Rheem began manufacturing water heaters. In the 1940s and 1950s, the company increased its product line to include space heating units for homes, oil furnaces and air conditioners. In 1959, Rheem became a pioneer in the water heating industry. In subsequent years, Rheem entered the heating and air conditioning market and expanded in the late 1960s and 1970s with the rapid growth of the central air conditioning industry. In 1985, the company acquired Raypak®, a leading producer of copper tube boilers used for swimming pool heating, commercial hot water supply and hydronic heating.

**Office / School / Restaurant / Health Care / Retail**

In every industry, reliable cost efficient heating and cooling is not an option... it is an absolute necessity.

Whether you're looking to keep a workplace cool and productive, students attentive, consumers comfortable or even need to ensure optimal conditions for climate-sensitive materials, Rheem Commercial Series equipment can get the job done. One of the world's leading manufacturers of central heating and cooling products, Rheem distributes a full line of industry standard R-410A commercial products — up to 25 tons.

**TOTAL COMFORT SOLUTIONS PROVIDER**

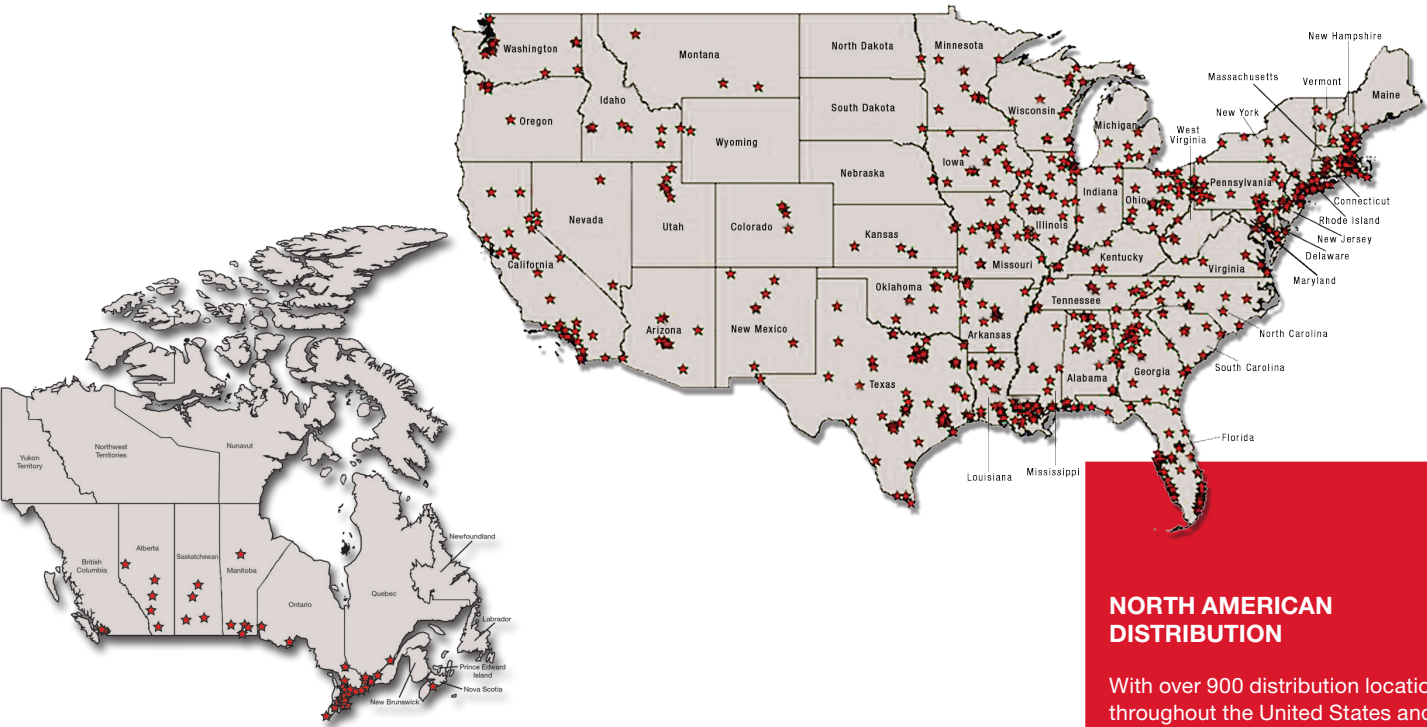
Rheem is an industry leader for total heating, cooling and water heating solutions. In fact, Rheem is one of the few global brands with product offerings covering residential and commercial heating, cooling, conventional and hybrid storage-style water heaters, tankless water heaters, solar water heating systems, hydronic and geothermal systems, indoor air quality accessories, and replacement parts for all categories — making Rheem a one-stop Air and Water comfort solutions provider.

**BUSINESS SOLUTIONS**

Multi-million dollar testing facilities are utilized to create the heavy duty business solutions you depend on. Every commercial unit undergoes a complete and unrelenting system of evaluation and testing to ensure its quality and reliability. The ability to withstand rigorous salt spray testing in operating conditions from 0°F-125°F, proves that Rheem Commercial Series units are the toughest in the industry. Our lean manufacturing focus, including state-of-the-art machinery, provides the flexibility required to integrate new innovative designs quickly, ensuring swift product introduction and availability. Nothing is spared when it comes to advancing the value of Rheem Commercial Series equipment. Satisfaction Guaranteed.

**MISSION CONTROL**

The Commercial Series product line is designed and produced in Fort Smith, Arkansas. The manufacturing facility, measuring over 19.8 acres under one roof, is dedicated to the development and production of equipment guaranteed to satisfy the comfort requirements of every industry.



**NORTH AMERICAN DISTRIBUTION**

With over 900 distribution locations throughout the United States and Canada, we are determined to give you access to our Commercial Series product line when and where you need it.  
**Fast, simple delivery guaranteed.**





COMMERCIAL  
PRODUCT GUIDE

COMMERCIAL  
PRODUCT GUIDE

PACKAGE GAS ELECTRIC



**RGEA16  
Prestige® Series**  
• 1 & 3 Phase Models  
• Scroll™ Compressor  
• Nominal Sizes: 2 – 5 Ton



**RGEA15  
Classic® Series**  
• 1 & 3 Phase Models  
• Scroll™ Compressor  
• Micro Channel Coil  
• Nominal Sizes: 2 – 5 Ton



**RGEA14  
Classic® Series**  
• 1 & 3 Phase Models  
• Scroll™ Compressor  
• Micro Channel Coil  
• Nominal Sizes: 2 – 5 Ton



**CLEARControl™**  
**RKQN-A/-C (15 SEER)  
Commercial  
Classic® Plus Series**  
• 1 & 3 Phase  
• -A Electro Mech. Models  
• -C 3 Phase DDC Models  
• Scroll™ Compressor  
• Nominal Sizes: 3, 4, 5 Ton



**CLEARControl™**  
**RKPN-A/-C (14 SEER)  
Commercial  
Classic® Series**  
• 1 & 3 Phase  
• -A Electro Mech. Models  
• -C 3 Phase DDC Models  
• Scroll™ Compressor  
• Nominal Sizes: 3, 4, 5 Ton



**RKKN-B  
Commercial  
Classic® Series**  
• 3 Phase Electro  
Mech. Models  
• Efficiencies up to 11.2 EER  
• Scroll™ Compressor  
• Micro Channel Coil  
• Nominal Sizes: 6 Ton



**RGEDZT  
Commercial  
Prestige® Series**  
• Standard VFD and optional  
HumidiDry® Technology  
• Two-Stage Cooling  
• PlusOne® Diagnostics with  
7-Segment LED Display  
• PlusOne® ServiceSmart package  
• Nominal Sizes: 7.5, 8.5, 10 &  
12.5 Ton



**RGEDZS  
Commercial  
Classic Plus® Series**  
• Optional VFD and HumidiDry®  
Technology  
• Two-Stage Cooling  
• PlusOne® Diagnostics with  
7-Segment LED Display  
• PlusOne® ServiceSmart package  
• Nominal Sizes: 7.5, 8.5, 10 &  
12.5 Ton



**RGEDZR  
Commercial  
Classic® Series**  
• Single-Stage Cooling  
• PlusOne® Diagnostics with  
7-Segment LED Display  
• PlusOne® ServiceSmart package  
• Nominal Sizes: 7.5, 8.5, & 10 Ton



**RKNL-B  
Commercial  
Classic® Series**  
• 3 Phase  
Electro Mech. Models  
• Scroll™ Compressor  
• Nominal Sizes:  
15, 17.5 & 20 Ton



**CLEARControl™**  
**RKNL-C/-G/-H  
Commercial Classic® Series - Reheat Models**  
• 3 Phase DDC Models with Scroll™ Compressor  
• Nominal Sizes:  
-C Models: (15, 17.5, 20 & 25 Ton)  
-G Models: (5, 20 & 25 Ton)  
-H Models: (15, 20 & 25 Ton)  
• RKNL-G: HumidiDry® models &  
features VFD Technology on 7.5 Ton & above  
• RKNL-H: Includes VFD Technology

PACKAGE AIR CONDITIONERS



**CLEARControl™**  
**RKRL-C/-H  
Commercial  
Prestige® Series**  
• 3 Phase DDC Models  
• Scroll™ Compressor  
• Nominal Sizes: 15 - 20 Ton  
• RKRL-H: Includes VFD  
Technology



**RACA15  
Classic® Series**  
• 1 & 3 Phase Models  
• Scroll™ Compressor  
• Micro Channel Coil  
• Nominal Sizes: 2 – 5 Ton



**RACA14  
Classic® Series**  
• 1 & 3 Phase Models  
• Scroll™ Compressor  
• Micro Channel Coil  
• Nominal Sizes: 2 – 5 Ton



**RSPM (14 SEER)  
Classic® Series**  
• 1 & 3 Phase Models  
• Scroll™ Compressor  
• Nominal Sizes: 2 – 5 Ton



**CLEARControl™**  
**RLQN-A/-C (15 SEER)  
Commercial  
Classic® Series**  
• 1 & 3 Phase  
• -A Electro Mech. Models  
• -C 3 Phase DDC Models  
• Scroll™ Compressor  
• Nominal Sizes: 3, 4, 5 Ton



**CLEARControl™**  
**RLPN-A/-C (14 SEER)  
Commercial  
Classic® Series**  
• 1 & 3 Phase  
• -A Electro Mech. Models  
• -C 3 Phase DDC Models  
• Scroll™ Compressor  
• Nominal Sizes: 3, 4, 5 Ton  
• HumidiDry® option available



**RLKN-B  
Commercial  
Classic® Series**  
• 3 Phase Electro  
Mech. Models  
• Efficiencies up to 11.2 EER  
• Scroll™ Compressor  
• Micro Channel Coil  
• Nominal Sizes: 6 Ton



**RACDZT  
Commercial  
Prestige® Series**  
• Standard VFD and optional HumidiDry®  
Technology  
• Two-Stage Cooling  
• PlusOne® Diagnostics with 7-Segment  
LED Display  
• PlusOne® ServiceSmart package  
• Nominal Sizes: 7.5, 8.5, 10 & 12.5 Ton



**RACDZS  
Commercial  
Classic Plus® Series**  
• Optional VFD and HumidiDry®  
Technology  
• Two-Stage Cooling  
• PlusOne® Diagnostics with 7-Segment  
LED Display  
• PlusOne® ServiceSmart package  
• Nominal Sizes: 7.5, 8.5, 10 & 12.5 Ton



**RACDZR  
Commercial  
Classic® Series**  
• Single-Stage Cooling  
• PlusOne® Diagnostics with  
7-Segment LED Display  
• PlusOne® ServiceSmart package  
• Nominal Sizes: 7.5, 8.5, & 10 Ton



**RLNL-B  
Commercial  
Classic® Series**  
• 3 Phase Electro  
Mech. Models  
• Scroll™ Compressor  
• Nominal Sizes: 15, 17.5,  
20 & 25 Ton

PACKAGE HEAT PUMPS



**CLEARControl™**  
**RLNL-C/-G/-H  
Commercial Classic® Series**  
• 3 Phase DDC Models with Scroll™ Compressor  
• Nominal Sizes:  
-C Models: (20 & 25 Ton)  
-G Models: (15, 20 & 25 Ton)  
-H Models: (15, 20 & 25 Ton)  
• RLNL-G: HumidiDry® models & features  
VFD Technology on 7.5 Ton & above  
• RLNL-H: Includes VFD Technology



**CLEARControl™**  
**RLRL-C/-H  
Commercial  
Prestige® Series**  
• 3 Phase DDC Models  
• Scroll™ Compressor  
• Nominal Sizes: 15 & 20 Ton  
• RLRL-H: Includes VFD  
Technology



**RQRM (16 SEER)  
Prestige® Series**  
• Efficiencies up to 16 SEER/  
13 EER/ 8.5 HSPF  
• 1 & 3 Phase Models  
• Scroll™ Compressor  
• X-13 Motor  
• Nominal Sizes: 2 – 5 Ton



**RQPM (14 SEER)  
Classic® Series**  
• 1 & 3 Phase Models  
• Scroll™ Compressor  
• Nominal Sizes: 2 – 5 Ton



**RQPL-A (14 SEER)  
Classic® Series**  
• 1 & 3 Phase Models  
• Convertible Airflow  
• Scroll™ Compressor  
• Nominal Sizes: 2 – 4 Ton



**CLEARControl™**  
**RJPL-C (14 SEER)  
Commercial  
Classic® Series**  
• 3 Phase DDC Models  
• Scroll™ Compressor  
• Nominal Sizes: 3 – 5 Ton



**RJPL-A (14 SEER)  
Commercial  
Classic® Series**  
• 1 & 3 Phase  
Electro Mech. Models  
• Scroll™ Compressor  
• Nominal Sizes:  
3 – 5 Ton



**CLEARControl™**  
**RJNL-C  
Commercial  
Classic® Series**  
• 3 Phase DDC Models  
• Efficiencies up to 11 EER  
(6 Ton only)  
• Scroll™ Compressor  
• Nominal Sizes: 6 Ton



**H2AC**  
**RLHL  
Commercial  
Classic® Series**  
• Package Air Conditioner  
• eSync® Integration Technology  
• Preheats Water  
• 3 Phase Models  
• Nominal Size: 15 Ton



**H2AC**  
**RKHL  
Commercial  
Classic® Series**  
• Package Gas Electric  
• eSync® Integration Technology  
• Preheats Water  
• 3 Phase Models  
• Nominal Size: 15 Ton

COMMERCIAL SPLIT  
AIR HANDLERS



**RHGL  
Commercial  
Classic® Series**  
• 3 Phase Models  
• Cooling Operation Only  
• Nominal Sizes:  
7.5, 10, 15 & 20 Ton



**RHGM  
Commercial  
Classic® Series**  
• 3 Phase Models  
• Cooling & Heat Pump  
Operation Only  
• Nominal Sizes: 7.5 & 10 Ton



**RHGN  
Commercial  
Classic® Series**  
• 3 Phase Models  
• Cooling Operation Only  
• Two-Stage Airflow  
• Nominal Sizes: 10 Ton

Commercial Series

Limited Warranty\* Information:

- Refer to applicable manufacturer product warranty card for specific details
- Compressor – 5 Years (Commercial Applications)
- Parts – 1 Year (Commercial Applications)
- Stainless Steel Heat Exchanger – 20 Years (Commercial Applications)
- Standard Heat Exchanger– 10 Years (Commercial Applications)

\*For the residential application warranty terms, refer to applicable manufacturer product warranty card.

COMMERCIAL SPLIT  
HEAT PUMP



**RPWL  
Commercial  
Classic® Series**  
• Efficiencies up to 11 SEER  
• 3 Phase Models  
• Scroll™ Compressor  
• Nominal Sizes: 7.5 & 10 Ton

COMMERCIAL SPLIT  
CONDENSING UNIT



**RAWL  
Commercial  
Classic® Series**  
• Efficiencies up to 11.2 SEER  
• 3 Phase Models  
• Scroll™ Compressor  
• Nominal Sizes: 6.5, 7.5, 10,  
12.5, 15 & 20 Ton



COMMERCIAL PRODUCT  
FEATURES & OPTIONS

STANDARD FEATURES

- R-410A Refrigerant
- TXV refrigerant control\*
- Enhanced access with 1/4 turn fasteners and hinges\*
- Removable drain pan\*
- High and low pressure control
- Filter driers
- Easy low voltage connection
- Molded compressor plug
- Enhanced wiring harnesses
- Slide-out indoor fan assembly\*
- Cooling operation to 125°F
- Smoke detector wiring\*
- Improved IFC (Integrated Furnace Control)
- Thru-the-curb gas piping\*
- Dependable outdoor fan shaft down design
- Evaporator is intertwined face split
- Sturdy cabinet
- Scroll™ compressor technology in all models
- Powder coat paint finish
- Convertible airflow
- External gauge ports
- Optional louvered hail guards
- Factory charged, wired and run-tested
- Drawn base pan
- Commercial grade base rails

\*Not standard on all models. See model specifications sheet for details.

FACTORY & FIELD OPTIONS



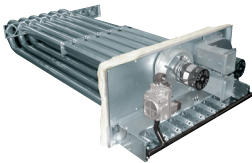
HAIL GUARD

- Provides coil protection from hail or vandalism



ECONOMIZER

- Single Enthalpy (Outdoor)
- Optional Field-Installed Power Exhaust
- Optional Field-Installed Carbon Dioxide Detector
- Optional Field-Installed Dual Enthalpy
- California Energy Code 24 Compliant



STAINLESS STEEL  
HEAT EXCHANGER

- Limited Lifetime Warranty in Residential Applications
- 20-Year Warranty in Commercial Applications



UNWIRED  
CONVENIENCE  
OUTLET

- 120 VAC
- 15 amp GFCI



UNFUSED SERVICE  
DISCONNECT

- Provides convenient disconnect access



ROOF CURB

RXSG

- 2-5 TON

RXKG

- 3-25 TON

ROOF CURB ADAPTERS

RXXR



COMMERCIAL COILS  
RCCL

- Dual Furnace Coils
- Nominal Sizes: 6.5, 7.5 & 10 Ton

ADDITIONAL OPTIONS

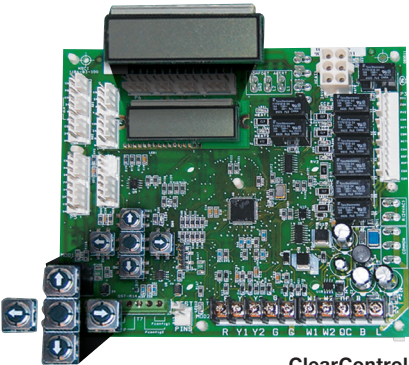
- Low Ambient Control Kit
- Freeze-Stat Kit



ClearControl

ClearControl™ is a Rheem® exclusive Direct Digital Control (DDC) that constantly monitors multiple parameters, providing industry leading diagnostics and communication.

- Two line, 16 character LCD
- Keypad driven menu
- Compatible with most 24 volt thermostats
- BAS compatible (Modbus, BACnet or LonWorks)
- Unmatched factory sensors, unprecedented diagnostics



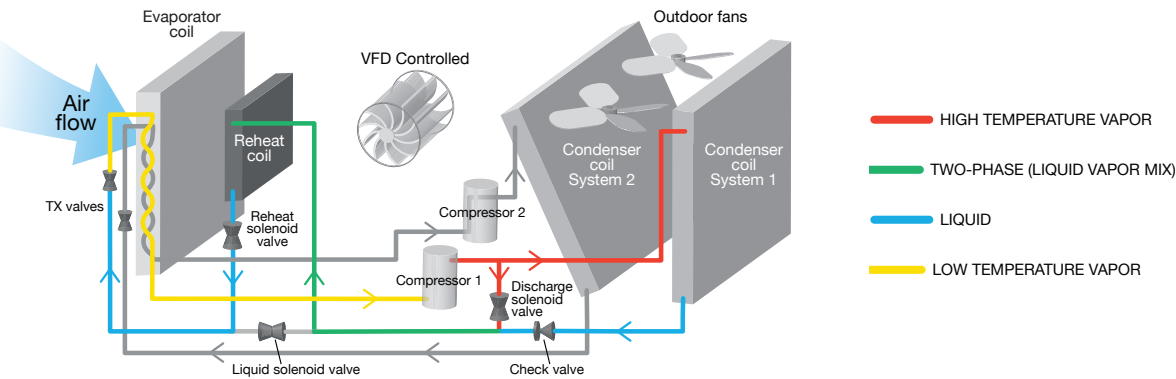
ClearControl

HumidiDry

The HumidiDry® Series from Rheem keeps humidity levels constant, even when there's little or no demand for air conditioning, giving business owners independent control of temperature and humidity.

- Delivers dry, neutral air in reheat mode
- Available on package gas electric units and package air conditioners in 3-25 ton models
- Variable Frequency Drive (VFD) Technology standard on 7.5 ton and above models
- Easy installation and service with ClearControl

DEHUMIDIFICATION MODE







COMMERCIAL PRODUCT SPECIFICATIONS

VFD TECHNOLOGY

Rheem® Commercial Series Package Units, featuring VFD Technology integrate variable frequency drive operation for substantial energy savings and improved comfort.

- 85% reduction of indoor fan power during ventilation and first stage cooling
- Improves part load efficiency (IEER) up to 51%
- Removes twice as much moisture than standard package units for lower relative humidity and increased comfort
- Meets ASHRAE 90.1-2010 and California Title 24 requirements
- Available on 7.5-25 ton package gas electric units and package air conditioners



VFD TECHNOLOGY

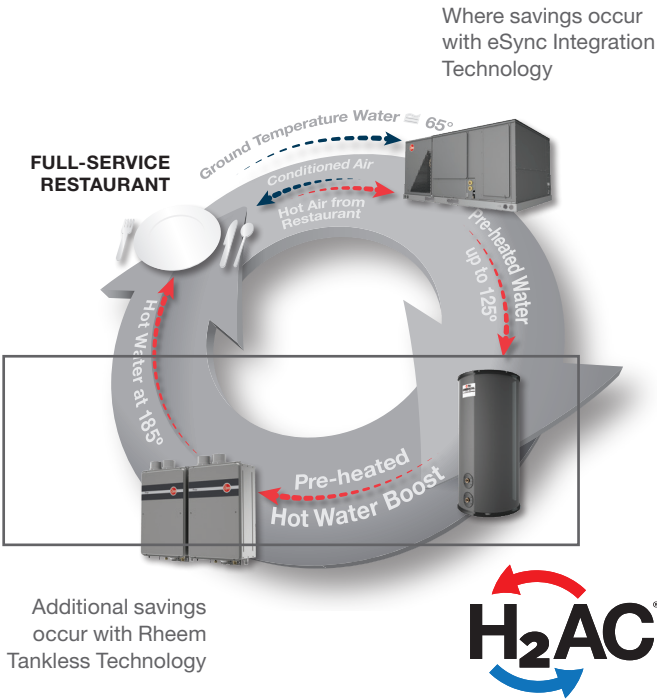
AIR & WATER WORKING TOGETHER™

Rheem H<sub>2</sub>AC® Rooftop Unit featuring eSync® Integration Technology

The Integrated Air and Water System is the first and only system of its kind, and it’s available exclusively from Rheem. Rheem’s proprietary eSync Integration Technology brings a new level of savings and efficiency to full-service restaurants by using heat that is normally rejected into the atmosphere to heat water for the restaurant. With the highly efficient Integrated Air and Water System, you will experience:

- Lowest cooling and water heating operational costs available
- Up to 50% savings on your annual water heating costs
- Up to 20% savings on your annual energy costs
- Less than a two-year payback\*
- Reduced energy footprint
- A system that contributes to your environmental initiatives
- A one-source provider for air and water solutions
- Trusted Rheem quality and reliability

\*Payback varies based on region, climate, usage and utility rates.



PACKAGE GAS ELECTRIC

COOLING DATA							HEAT INPUT		PHYSICAL DATA	
MODEL	NOMINAL TONNAGE	GROSS CAPACITY (BTUH)	AHRI RATED NET CAPACITY (BTUH)	NOMINAL CFM/AHRI (CFM)	EER	SEER/IEER	STANDARD: (BTUH)	HIGH: (BTUH)	DIMENSIONS H X W X L (INCHES)	SHIPPING WEIGHT (LBS)
RGEA14024	2	24800	24000	800/900	11.6	14/NA	40000	60000	36 x 48 x 53	413
RGEA14036	3	35400	34000	1200/1200	11.8	14/NA	60000	100000	36 x 48 x 53	431
RGEA14048	4	47500	46000	1600/1550	11.7	14/NA	80000	100000	41 x 48 x 53	492
RGEA14060	5	59000	57000	2000/1700	11.6	14/NA	100000	100000	41 x 48 x 53	522
RGEA15024	2	24600	24000	800/900	12	15/NA	60000	80000	36 x 48 x 53	418
RGEA15036	3	36000	35000	1200/1200	12	15/NA	60000	100000	36 x 48 x 53	431
RGEA15048	4	47500	46000	1600/1550	12	15/NA	80000	100000	41 x 48 x 53	507
RGEA15060	5	59500	49500/57000**	1250/1850	20/11	15/NA	100000	100000	41 x 48 x 53	525
RGEA16024	2	24,200	18,500/23800**	550/800	13.5/12.4	16/ NA	46,000/60,000**	NA	36 x 47 x 52	467
RGEA16036	3	36,800	25,000/36000**	800/1200	13.4/12.3	16/NA	76000/100000**	NA	41 x 47 x 52	558
RGEA16048	4	48500	34800/47000**	1050/1600	12.7/11.5	15/NA	76000/100000**	NA	41 x 47 x 52	562
RGEA16060	5	60500	41800/58000**	1250/1850	12/10.7	14/NA	76000/100000**	NA	41 x 47 x 52	594
RKPN-(A,C)036	3.0	36,200	34,600	1200/1250	11.6	14.00/NA	80,000	120,000	35 x 46.5 x 76	527
RKPN-(A,C)048	4.0	48,000	46,000	1600/1500	11.5	14.00/NA	80,000	135,000	35 x 46.5 x 76	567
RKPN-(A,C)060	5.0	60,000	58,500	2000/1800	11.5	14.00/NA	100,000	135,000	35 x 46.5 x 76	579
RKQN-(A,C)036	3.0	36,200	35,400	1200/1250	12.5	15/NA	80,000	120,000	35 x 46.5 x 76	532
RKQN-(A,C)048	4.0	48,000	46,500	1600/1600	12.5	15/NA	80,000	135,000	35 x 46.5 x 76	567
RKQN-(A,C)060	5.0	59,000	49,000/57,000**	1375/1800	19.9/11.5**	15/NA	100,000	135,000	35 x 46.5 x 76	579
RGEDZR090	7.5	88,000	85,000	3000/3175	11.0	NA/12.7	105,000/150,000**	143,000/205,000	50 x 58 x 89	878
RGEDZR102	8.5	99,000	96,000	3400/3200	11.0	NA/12.7	105,000/150,000**	157,500/225,000**	50 x 58 x 89	907
RGEDZR120	10.0	118,000	114,000	4000/3480	11.0	NA/12.7	105,000/150,000**	157,500/225,000**	50 x 58 x 89	935
RKKN-B073	6.0	70,000	68,000	2400/2100	11.0	NA/12.9	100,000	135,000	35 x 48 x 82	655
RGEDZS090	7.5	88,00	85,000	3000/3175	11	NA/12.7	105,000/150,000**	143,000/205,000**	50 x 58 x 89	878
RGEDZS102	8.5	99,000	96,000	3400/3225	11.0	NA/12.7	105,000/150,000**	157,500/225,000**	50 x 58 x 89	907
RGEDZS120	10.0	118,000	114,000	4000/3480	11.0	NA/12.7	105,000/150,000**	157,500/225,000**	50 x 58 x 89	935
RGEDZS150	12.5	148,000	142,000	5000/3750	11	NA/12.7	105,000/150,000**	157,500/225,000**	60 x 58 x 89	1133
RGEDZT090	7.5	88,000	85,000	3000/3175	11.0	NA/14.6	105,000/150,000**	143,000/205,000**	50 x 58 x 89	878
RGEDZT102	8.5	99,000	96,000	3400/3225	11.0	NA/14.6	105,000/150,000**	157,500/225,000**	50 x 58 x 89	907
RGEDZT120	10.0	118,000	79,600	4000/3480	11.0	NA/14.6	105,000/150,000**	157,500/225,000**	50 x 58 x 89	935
RGEDZT150	12.5	148,000	142,000	5000/3750	10.8	NA/14.0	105,000/150,000**	157,500/225,000**	60 x 58 x 89	1133
RKNL-(B,C)180	15.0	188,000	172,000	6000/5900	10.8	NA/12.2	125,000/250,000**	175,000/350,000**	57 x 86 x 152	2115
RKNL-(B,C)210	17.5	212,000	200,000	7000/7025	10.8	NA/12.2	125,000/250,000**	175,000/350,000**	57 x 86 x 152	2329
RKNL-(B,C)240	20.0	244,000	228,000	8000/7725	10.8	NA/12.2	150,000/300,000**	200,000/400,000**	57 x 86 x 152	2461
RKNL-(H,G)180*	15.0	188,000	172,000	6000/5900	10.8	NA/14	125,000/250,000**	175,000/350,000**	57 x 86 x 152	2206
RKNL-(H,G)240*	20.0	244,000	228,000	8000/7725	10.8	NA/14	150,000/300,000**	200,000/400,000**	57 x 86 x 152	2547
RKNL-(H,G)300*	25.0	312,000	286,000	10,000/9475	9.8	NA/13	150,000/300,000**	200,000/400,000**	57 x 86 x 152	2619
RKRL-(C,H)180*	15	178,000	174,000	6,000/5,500	12.2	NA/13.2/15	125,000/250,000**	175,000/350,000**	57 x 86 x 152	2,147
RKRL-(C/H) 240*	20	240,000	232,000	8,000/7,375	12.0	NA/12.8/14.6	150,000/300,000**	200,000/400,000**	57 x 86 x 152	2,389

\*H-VFD  
\*\*1st stage/2nd stage





COMMERCIAL PRODUCT SPECIFICATIONS

PACKAGE AIR CONDITIONERS

COOLING DATA							HEAT INPUT		PHYSICAL DATA	
MODEL	NOMINAL TONNAGE	GROSS CAPACITY (BTUH)	AHRI RATED NET CAPACITY (BTUH)	NOMINAL CFM/ AHRI (CFM)	EER	SEER/IEER	LOW	HIGH	DIMENSIONS H X W X L (INCHES)	SHIPPING WEIGHT (LBS)
RACA14A024	2	24,600	24,000	800/900	11.6	14/NA	NA	NA	36 x 48 x 53	413
RACA14A036	3	35,400	34,000	1200/1200	11.8	14/NA	NA	NA	36 x 48 x 53	421
RACA14A048	4	47,500	46,000	1600/1550	11.7	14/NA	NA	NA	41 x 48 x 53	487
RACA14A060	5	59,000	57,000	2000/1700	11.6	14/NA	NA	NA	41 x 48 x 53	522
RACA15A024	2	24600	24000	800/900	12	15/NA	NA	NA	36 x 48 x 53	413
RACA15A036	3	36,000	35,000	1200/1200	12.0	15/NA	NA	NA	36 x 48 x 53	421
RACA15A048	4	47,500	46,000	1600/1550	12.0	15/NA	NA	NA	41 x 48 x 53	502
RACA15A060	5	59,500	49500/57000	1250/1850	20.9/11.4	15/NA	NA	NA	41 x 48 x 53	525
RLPN-(A,C)036	3.0	36,200	34,600	1200/1250	11.6	14/NA	10	20	35 x 46.5 x 76	478
RLPN-(A,C)048	4.0	48,000	46,000	1600/1500	11.6	14/NA	10	20	35 x 46.5 x 76	503
RLPN-(A,C)060	5.0	60,000	58,500	2000/1800	11.6	14/NA	10	20	35 x 46.5 x 76	529
RLQN-(A,C)036	3.0	36,200	35,400	1200/1250	12.5	15/NA	6	20	35 x 46.5 x 76	492
RLQN-(A,C)048	4.0	48,000	46,500	1600/1600	12.5	15/NA	6	20	35 x 46.5 x 76	517
RLQN-(A,C)060	5.0	59,000	49,000/57,000**	1375/1800	19.9/11.6**	15/NA	6	20	35 x 46.5 x 76	5763
RLKN-B073	6	70,000	68,000	2400/2050	11.2	NA/12.9	6	24	35 x 48 x 82	581
RACDZR090	7.5	88,000	85,000	3000/3175	11.2	NA/12.9	10	40	50 x 56 x 89	775
RACDZR102	8.5	99,000	96,000	3400/3200	11.2	NA/12.9	10	40	50 x 56 x 89	801
RACDZR120	10.0	118,000	114,000	4000/3480	11.2	NA/12.9	10	40	50 x 56 x 89	830
RACDZS090	7.5	88,000	85,000	3000/3200	11.2	NA/12.9	10	40	50 x 56 x 89	775
RACDZS102	8.5	99,000	96,000	3400/3225	11.2	NA/12.9	10	40	50 x 56 x 89	801
RACDZS120	10.0	118,000	114,000	4000/3480	11.2	NA/12.9	10	40	50 x 56 x 89	830
RACDZS150	12.5	148,000	142,000	5000/4150	11.0	NA/12.4	10	40	60 x 56 x 89	1032
RACDZT090	7.5	88,000	85,000	3000/3200	11.2	NA/14.8	10	40	50 x 56 x 89	775
RACDZT102	8.5	99,000	96,000	3400/3225	11.2	NA/14.8	10	40	50 x 56 x 89	801
RACDZT120	10	118,000	114,000	4000/3480	11.2	NA/14.8	10	40	50 x 56 x 89	830
RACDZT150	13	148,000	142,000	5000/4150	11.0	NA/14.2	10	40	60 x 56 x 89	1032
RLNL-(B,C)180*	15.0	188,000	172,000	6000/5900	11.0	NA/12.4	20	75	57 x 86 x 152	2087
RLNL-(B,C)210*	17.5	212,000	200,000	7000/7025	11.0	NA/12.4	20	75	57 x 86 x 152	2169
RLNL-(B,C)240*	20.0	244,000	228,000	8000/7725	11.0	NA/12.4*	20	75	57 x 86 x 152	2427
RLNL-H300*	25.0	312,000	286,000	10,000/9475	11.0	NA/13.2	20	75	57 x 86 x 152	2387
RLNL-(H,G)180	15.0	188,000	172,000	6000/5900	11.0	NA/14.2	20	75	57 x 86 x 152	2061
RLNL-(H,G)240	20.0	244,000	228,000	8000/7725	11.0	NA/14.2	20	75	57 x 86 x 152	2395
RLNL-(H,G)300	25.0	286,000	288,000	10,000/9475	10.0	NA/13.2	20	75	57 x 86 x 152	2467
RLRL-(C,H)180*	15	178,000	172,000	6,000/5,500	11.6	NA/12.4	20	75	57 x 86 x 152	2,047
RLRL-(C,H)240*	20	240,000	228,000	8,000/7,375	11.6	12.4	20	75	57 x 86 x 152	2,427

SPLIT SYSTEMS: AIR HANDLERS

COOLING DATA							HEAT INPUT				PHYSICAL DATA	
MODEL	NOMINAL TONNAGE	GROSS CAPACITY (BTUH)	AHRI RATED NET CAPACITY (BTUH)	NOMINAL CFM/AHRI (CFM)	EER	SEER/ IEER	47 Capacity	COP 47 Efficiency	17 Capacity	COP 17 Efficiency	DIMENSIONS H X W X L (INCHES)	SHIPPING WEIGHT (LBS)
RHGL-090	7.5	-	-	3000		-	-	-	-	-	31 x 56 x 57	350
RHGL-180	15	-	-	6000		-	-	-	-	-	39 x 63 x 76	530
RHGL-240	25	-	-	8000		-	-	-	-	-	39 x 63 x 76	580
RHGM-090	7.5	-	-	3000		-	-	-	-	-	31 x 56 x 57	411
RHGM-120	10	-	-	3000		-	-	-	-	-	31 x 56 x 57	418
RHGN-120	10	-	-	3735		-	-	-	-	-	31 x 56 x 57	449
RHGN-120	10	-	-	3735	-	-	-	-	-	-	31 x 56 x 57	449



\*H-VFD  
\*\*1st stage/2nd stage

COMMERCIAL PRODUCT SPECIFICATIONS

PACKAGE HEAT PUMPS

COOLING DATA							HEAT INPUT				PHYSICAL DATA	
MODEL	NOMINAL TONNAGE	GROSS CAPACITY (BTUH)	AHRI RATED NET CAPACITY (BTUH)	NOMINAL CFM/ AHRI (CFM)	EER	SEER/ IEER	47 Capacity	COP 47 Efficiency	17 Capacity	COP 17 Efficiency	DIMENSIONS H X W X L (INCHES)	SHIPPING WEIGHT (LBS)
RJNL-(B,C)072	6.0	73,000	70,000	2400/2125	11.0	NA/13.2	68,000	3.4	41,000	2.3	35 x 48 x 76	635
RJPL-(A,C)036	3.0	37,800	36,800	1200/1200	12.0	14.00	33,600	3.5	19,400	2.2	35 x 48 x 76	532
RJPL-(A,C)042	3.5	44,000	42,000	1400/1400	11.6	14.00	40,000	3.6	24,200	2.4	35 x 48 x 76	536
RJPL-(A,C)048	4.0	50,000	47,500	1600/1600	11.6	14.00	49,000	3.8	29,800	2.4	35 x 48 x 76	550
RJPL-(A,C)060	5.0	61,000	59,500	2000/1850	11.7	14.00	59,500	3.6	36,400	2.2	35 x 48 x 76	580

SPLIT SYSTEMS: CONDENSING UNITS & HEAT PUMPS

COOLING DATA							HEAT INPUT				PHYSICAL DATA	
MODEL	NOMINAL TONNAGE	GROSS CAPACITY (BTUH)	AHRI RATED NET CAPACITY (BTUH)	NOMINAL CFM/ AHRI (CFM)	EER	SEER/ IEER	47 Capacity	COP 47 Efficiency	17 Capacity	COP 17 Efficiency	DIMENSIONS H X W X L (INCHES)	SHIPPING WEIGHT (LBS)
RA1336	3.0	-	34,600	1025	11.0	13.00	-	-	-	-	27 x 30 x 30	164
RA1342	3.5	-	40,500	1400	11.0	13.00	-	-	-	-	31 x 30 x 30	195
RA1348	4.0	-	47,500	1500	11.0	13.00	-	-	-	-	27 x 34 x 34	202
RA1360	5.0	-	56,000	1600	11.0	13.00	-	-	-	-	31 x 36 x 36	235
RA1436	3.0	-	34,200	1050	11.5	14.00	-	-	-	-	27 x 34 x 34	178
RA1442	3.5	-	41,500	1425	11.5	14.00	-	-	-	-	31 x 34 x 34	207
RA1448	4.0	-	46,000	1450	11.7	14.00	-	-	-	-	31 x 36 x 36	232
RA1460	5.0	-	57,000	1575	11.7	14.00	-	-	-	-	35 x 36 x 36	244
RAWL-079	6.5	-	77,000	2575	11.5	12.9	-	-	-	-	45 x 36 x 36	252
RAWL-091	7.5	-	92,000	2725	11.5	12.9	-	-	-	-	51 x 36 x 36	313
RAWL-121	10.0	-	118,000	3800	11.2	-	-	-	-	-	45 x 38 x 61	597
RAWL-125	10.0	-	116,000	3800	11.2	-	-	-	-	-	45 x 38 x 61	626
RAWL-150	12.5	-	146,000	5000	11.1	NA/14.6	-	-	-	-	45 x 38 x 61	690
RAWL-180	15.0	-	178,000	5100	11.0	NA/13	-	-	-	-	45 x 38 x 61	786
RAWL-240	20.0	-	244,000	6900	10.0	NA/12.7	-	-	-	-	45 x 38 x 61	992
RP1436	3.0	-	35,200	1200	11.5	14.00	-	-	-	-	27 x 34 x 34	187
RP1442	3.5	-	42,500	1400	11.5	14.00	-	-	-	-	27 x 34 x 34	208
RP1448	4.0	-	48,000	1525	11.5	14.00	-	-	-	-	35 x 34 x 34	234
RP1460	5.0	-	56,500	1800	11.5	14.00	-	-	-	-	39 x 36 x 36	269
RP1536	3.0	-	35,600	1175	12.5	15.00	-	-	-	-	35 x 34 x 34	179
RP1542	3.5	-	42,500	1350	12.5	15.00	-	-	-	-	35 x 34 x 34	187
RP1548	4.0	-	47,000	1500	12.5	15.00	-	-	-	-	39 x 36 x 36	215
RP1560	5.0	-	58,000	1775	12.5	15.00	-	-	-	-	45 x 36 x 36	243
RPWL-090	7.5	-	86,000	3000	11.0	-	90,000	3.30	55,000	2.20	49 x 31 x 42	448
RPWL-120	10.0	-	116,000	3750	11.0	-	120,000	3.30	68,000	2.20	45 x 38 x 74	686



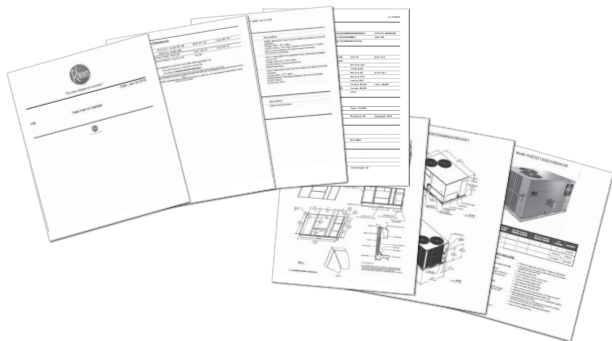
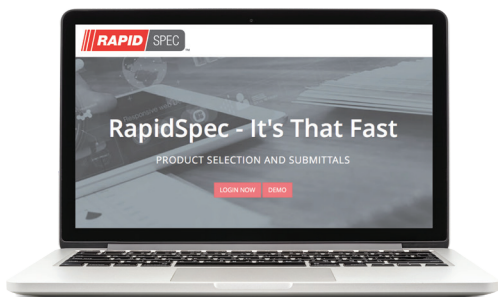
## RHEEM COMMERCIAL SALES TOOLS



RapidSpec® is a web-based specification and selection software tool. It was designed to quickly aid HVAC professionals in properly selecting Rheem® equipment for any commercial project. This tool has fewer screens than our previous program to navigate and can take less than five minutes to get submittal packages customized for each job or application — you won't believe the speed!

### Key Benefits:

- Simple and easy to configure a model and select product
- Generate performance data for custom conditions
- Offers model and accessory drawings
- Quickly specify commercial jobs by creating full submittal package



## PROSTOCK®

Our national chain of Rheem Replacement Parts stores, PROSTOCK®, are conveniently located to ensure parts availability at all times without the hassles.



### Grow Your Business With Quick & Simple Financing

- **No Rising Rates** – Finance payments are fixed for the term of the financing
- **100% Financing** – Get more flexibility with no down payment, and finance your complete solution, including warranties, tax, freight and installation
- **Save Your Bank Credit** – Financing preserves your bank credit lines
- **Flexible Payment Plans** – Longer and more flexible terms than other financing—12–72 months are available on equipment
- **Stay Competitive, Avoid Obsolescence** – Options include purchases, upgrades or trade-ins, so you never have to be stuck with inefficient equipment



With our Protection Plus® extended service agreement program, your customers are protected from unexpected, unbudgeted repairs after the limited warranty expires. Protection Plus limited warranty can also be extended.



### INTERNATIONAL STANDARDS ORGANIZATION (ISO) CERTIFICATION

Certification means that Rheem has passed a series of independent audits proving it maintains a modern quality control system to consistently provide quality products. These audits assess all of a company's systems that affect quality. All Rheem manufacturing facilities have achieved the prestigious ISO 9001:2015 Certification. Rheem was the first HVAC manufacturer in North America to earn this distinction in all of its manufacturing facilities.



*In keeping with its policy of continuous progress and product improvement, Rheem reserves the right to make changes without notice.*

Rheem USA • P.O. Box 17010  
Fort Smith, Arkansas 72917

Rheem Canada Ltd./Ltée • 125 Edgeware Road, Unit 1  
Brampton, Ontario L6Y 0P5

**Rheem.com/Commercial**