

# SUBMITTAL SHEET FOR GAS/ELECTRIC ROOFTOP UNITS: RKNL-B WITH CAPACITIES FROM 15-20 TONS [52.8-70.3 kW]



JOB NAME \_\_\_\_\_  
 CONTRACTOR \_\_\_\_\_  
 ENGINEER \_\_\_\_\_  
 LOCATION \_\_\_\_\_  
 ORDER NO. \_\_\_\_\_  
 SUBMITTED FOR  APPROVAL  RECORD  
 SUBMITTED BY \_\_\_\_\_  
 DATE \_\_\_\_\_  
 UNIT DESIGNATION \_\_\_\_\_  
 MODEL NO. \_\_\_\_\_

## FEATURES FOR GAS/ELECTRIC ROOFTOP UNITS 15-20 NOMINAL TONS [52.8-70.3 kW]

### Gas Heat

- Two-Stage Gas Valve (50/100%) for Superior Comfort Control at Minimum Operating Cost
- Quad Inducers allow for 81% A.F.U.E. Steady state efficiency at High and Low Stage
- Rheem Exclusive In-shot Burners
- Solid State, Direct Spark Ignition with Remote Flame Sense and on-board diagnostics

### Cooling

- R410 Refrigerant
- Quiet, Efficient, Twin Copeland® Scroll® Compressors
- Two-Stage Cooling for Superior Comfort Control at Minimum Operating Cost
- Belt-drive Blower with optional drive to accommodate design conditions as high as 2.0 inches [.37 kPa] of external static pressure at nominal airflow
- Copper Tube/Aluminum Fin Coils

### Service Features

- Hinged Access Panels for Convenience
- Large Control Panel with numbered and color coded wiring for Easy Troubleshooting
- Front Access, Slide-Out Blower Assembly for Easy Maintenance
- Convertible Airflow for Maximum Flexibility
- Solid-State Furnace Controls with Diagnostic L.E.D. for Easy Troubleshooting
- Slide out Condensate Drainpan
- Factory-Installed two-inch [50.8 mm], throw away filters. Accessible without tools
- Externally-mounted refrigerant gauge ports
- Side or Base utility access minimizing roof penetrations
- Full perimeter, forkable, riggable baserails with protective forkboards for easy handling
- Plug-in Electrical Connections on outdoor fan assemblies
- Unit is prewired to accept Slip-in Economizer
- Rigging holes and fork lift slats in base rails for lifting
- Complete Factory Tested, Charged Wired

### Reliability Features

- One-piece Top and Base pan on indoor section. One-inch [25.4 mm] raised flanges on supply/return opening for superior water management
- Aluminized Steel Heat Exchanger helps eliminate corrosion
- Base pan Insulation mounted on bottom helps eliminate corrosion and improves indoor air quality
- Non-Corrosive, sloped drain pan helps improve indoor air quality
- Insulation secured by adhesive and mechanical means
- Electrodeposition powder-coat paint process guards against extreme weather conditions and withstands 1000-hour salt-spray test
- Solid core liquid line filters
- High and Low pressure switches

[ ] Designates Metric Conversions

## UNIT DATA

### COOLING PERFORMANCE

TOTAL CAPACITY\* ..... MBH  
 SENSIBLE CAPACITY\* ..... MBH  
 EFFICIENCY (at ARI)..... EER  
 PART LOAD EFFICIENCY ..... IPLV  
 AMBIENT DB TEMP ..... °F  
 ENTERING DB TEMP ..... °F  
 ENTERING WB TEMP ..... °F  
 LEAVING DB TEMP ..... °F  
 LEAVING WB TEMP ..... °F  
 POWER INPUT (w/o blower) ..... kW  
 ELEVATION ..... FT  
 SOUND POWER ..... DBELS

### HEATING PERFORMANCE

GAS HEAT INPUT..... BTU  
 GAS HEAT OUTPUT ..... BTU  
 STEADY STATE EFFICIENCY ..... %

### SUPPLY AIR BLOWER PERFORMANCE

SUPPLY AIR ..... CFM [L/s]  
 OUTSIDE AIR..... CFM [L/s]  
 EXTERNAL STATIC PRESSURE..... IWG  
 DUCT CONNECTION LOCATION .....  
 BLOWER SPEED ..... RPM  
 MOTOR RATING ..... HP [W]  
 BRAKE HORSEPOWER ..... BHP  
 POWER INPUT REQUIREMENT ..... kW

### ELECTRICAL DATA

POWER SUPPLY ..... Hz  
 MINIMUM CIRCUIT AMPACITY ..... AMPS  
 MAXIMUM OVERCURRENT DEVICE  
 FUSE SIZE ..... AMPS  
 HACR CIRCUIT BREAKER ..... AMPS

### DIMENSIONS & WEIGHT

HEIGHT\_\_\_ IN WIDTH\_\_\_ IN DEPTH \_\_\_ IN  
 TOTAL WEIGHT ..... LBS [kg]  
(including factory options)

### CLEARANCES

FRONT 80" [2032 mm]	BACK 18" [457 mm]
BOTTOM 0"	TOP 60" [1524 mm]
LEFT SIDE 18" [457 mm]	36" [914 mm]
RIGHT SIDE (condenser end)	18" [457 mm]

**BOTTOM VIEW**

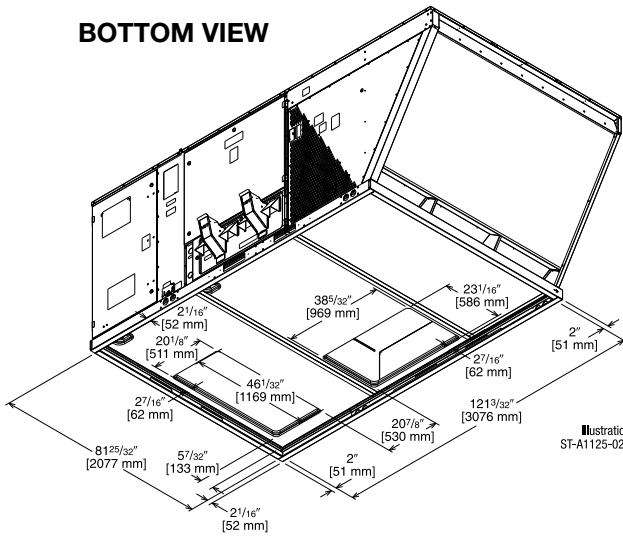


Illustration SF-A1125-02A

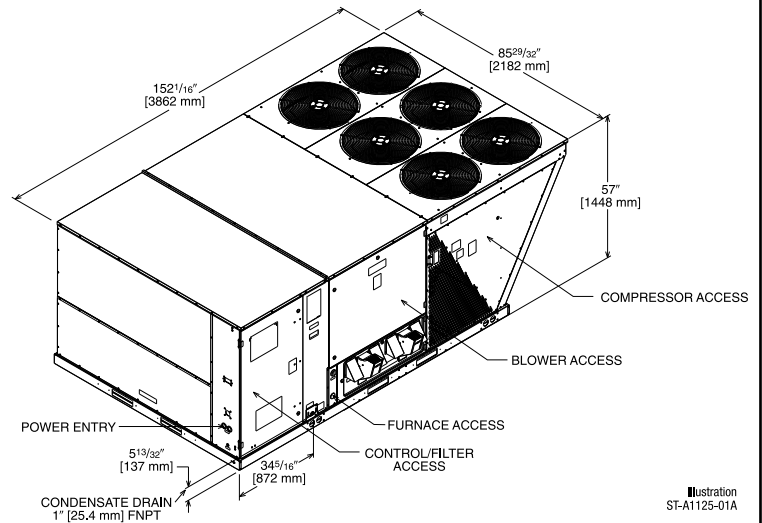


Illustration SF-A1125-01A

**ROOFCURB INSTALLATION**

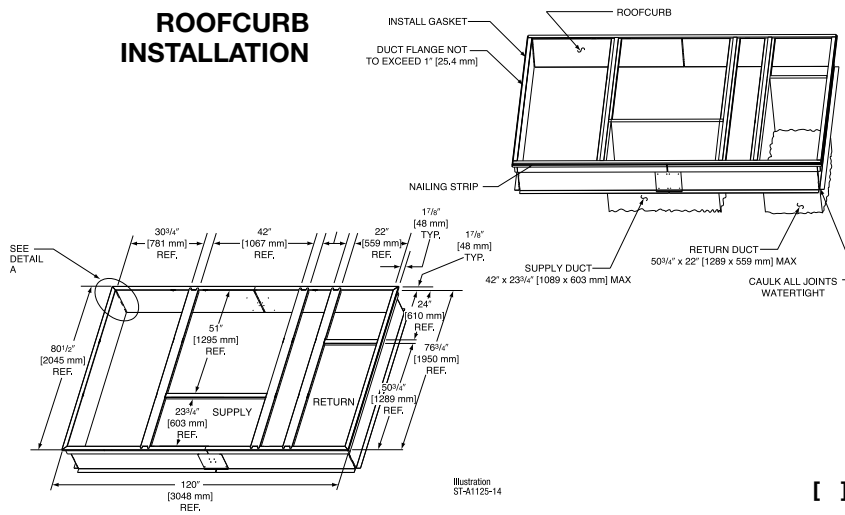


Illustration SF-A1125-14

[ ] Designates Metric Conversions

**ACCESSORIES**

**Factory Installed**

- Stainless Steel Gas Heat .....
- Single Enthalpy w/Barometric Relief .....
- Single Enthalpy w/Barometric Relief and Smoke Detector .....
- Disconnect Switch .....
- Convenience Outlet (Non-Powered) .....
- Oversized Blower Motor .....
- Low Ambient .....
- Freeze Stat .....

**Field Installed**

- 14" Full Perimeter Roof .....
- Roof Curb Adapter .....
- Dual Enthalpy Sensor .....
- Power Exhaust .....
- CO<sub>2</sub> Sensor .....
- Natural Gas High Altitude Kit .....
- Propane Conversion Kit .....
- Concentric Diffuser .....
- Low Ambient Kit .....
- Freeze Stat .....
- Manual Outside Air Intake Damper .....
- Motorized Outside Air Intake Damper .....
- Single Enthalpy w/Barometric Relief .....
- Single Enthalpy w/Barometric Relief and Smoke Detector .....

**Before proceeding with installation, refer to installation instructions packaged with each model, as well as complying with all Federal, State, Provincial, and Local codes, regulations, and practices.**

Rheem Sales Company, Inc.  
P.O. Box 17010, Fort Smith, AR 72917

*"In keeping with its policy of continuous progress and product improvement, Rheem reserves the right to make changes without notice."*