

Job Name: _____
 System Reference: _____ Date: _____



Indoor Unit: PLA-A12BA6



Outdoor Unit: PUY-A12NHA6 (-BS)

UNIT OPTION:

- Standard Model.....PUY-A12NHA6
- Seacoast (BS) Model.....PUY-A12NHA6-BS

ACCESSORIES:

Indoor Unit

- Condensate Pump (BlueDiamond X87-711/721; 115/230V)
- Condensate Pump (Sauermann SI30-115/230; 115/230V)
- iSee Corner Panel (PAC-SA1ME-E)
- Multifunction Casement / MERV 10 Filter (PAC-SH53TM-E / PAC-SH59KF)
- Air Outlet Plates (PAC-SH51SP-E)

Outdoor Unit

- Wind Baffle (WB-PA1)*
*Allows operation to 0° F (-18° C).
- Advanced Wind Baffle (WB-SD1 and/or WB-RE1)**
**Allows operation to -20° F (-29° C).
- Air Outlet Guide (PAC-SG58SG-E)
- Wall Bracket (QSWB2000M-1)

Controls

- Wireless Controller (MHK1)
- Advanced Wired Controller (PAR-31MAA)
- Simple Wired Controller (PAC-YT53CRAU)
- M-NET Adapter (PAC-SF83MA-E)
- Temperature Sensor (PAC-SE41TS)

SPECIFICATIONS:

Rated Conditions (Capacity / Input)*		
Cooling	Btu/h / W	12,000 / 1,260

* Rating Conditions per AHRI Standard:
 Cooling | Indoor: 80° F (27° C) DB / 67° F (19° C) WB
 Cooling | Outdoor: 95° F (35° C) DB / 75° F (24° C) WB

Capacity Range		
Cooling	Btu/h	6,000 - 12,000

Operating Range	
Cooling	-20° F to 115° F (-29° C to 46° C) DB**

**Applies only to systems utilizing Advanced Wind Baffle Kit.
 Equipment operation range without any additional accessories: 23° F to 115° F (-5° C to 46° C) DB.
 Equipment operation range with Standard Wind Baffle: 0° F to 115° F (-18° C to 46° C) DB.
 For operation below -20° F (-29° C) DB, please contact your Mitsubishi Electric representative.

AHRI Efficiency Ratings	
EER	9.5
SEER	14.0

Electrical Power Requirements	208 / 230V, 1-Phase, 60 Hz
-------------------------------	----------------------------

Minimum Circuit Ampacity (MCA)		
Indoor / Outdoor	A	1 / 13

Airflow Rate (Low-M1-M2-Hi)			
Indoor (Cooling)	DRY	CFM	390-420-460-530
	WET		350-390-420-490
Outdoor	DRY		1,200

Sound Pressure Level		
Indoor (Low-M1-M2-Hi)	dB(A)	27-28-29-31
Outdoor		Cooling

Indoor Unit		
Fan Motor (ECM)	F.L.A.	0.51
Fan Motor Output	W	50
SHF / Moisture Removal		0.84 / 1.7 pt./h
Drain Lift Mechanism (Included)	H: In.	33-7/16

Outdoor Unit		
Compressor		DC INVERTER-driven Twin Rotary
Fan Motor (ECM)	F.L.A.	0.35
MOCP	A	15

External Dimensions		
Indoor (H x W x D)	In.(mm)	10-3/16 x 33-1/16 x 33-1/16 (258 x 840 x 840)
Outdoor (H x W x D)		23-5/8 x 31-1/2 x 11-13/16 + 7/8 (600 x 800 x 300 + 23)

Net Weight		
Indoor	Lbs.(kg)	49 / 13 (22 / 6)
Outdoor		82 (37)

External Finish	
Indoor	Munsell No. 6.4Y 8.9/0.4
Outdoor	Munsell No. 3Y 7.8 / 1.1

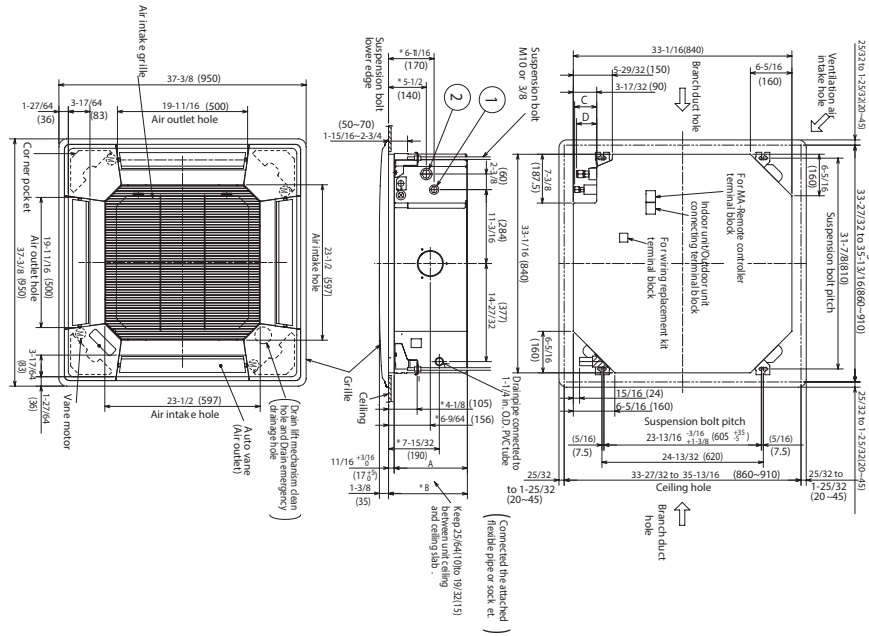
Refrigerant	R410A ; 2lbs., 14 oz..
-------------	------------------------

Refrigerant Piping (Flared)		
Liquid (High Pressure)	In.(mm)	1/4 (6.35)
Gas (Low Pressure)		1/2 (12.7)
Maximum Total Refrigerant Pipe Length	Ft. (m)	165 (50)
Maximum Vertical Separation	Ft. (m)	100 (30)

DIMENSIONS: PLA-A12BA6 & PUY-A12NHA6 (-BS)

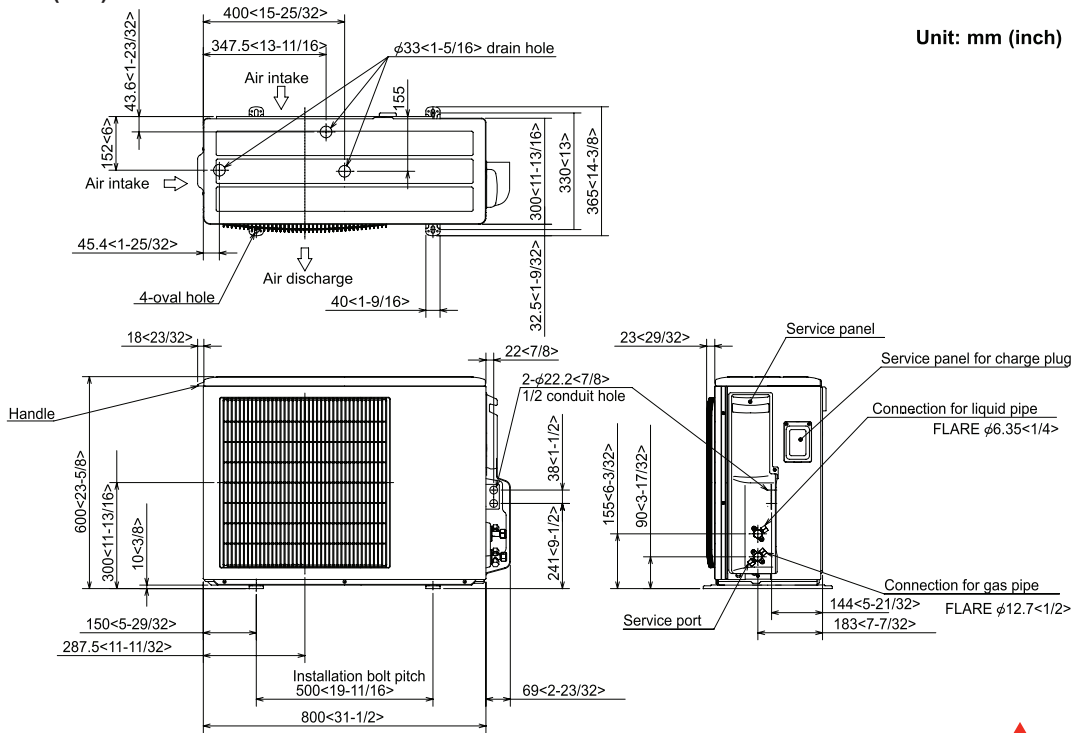
PLA-A12BA6

Unit : inch(mm)



PUY-A12NHA6 (-BS)

Unit: mm (inch)



NOTES:

SEACOAST PROTECTION

- External Outer Panel: Phosphate coating + Acrylic-Enamel coating
- Fan Motor Support: Epoxy resin coating (at edge face)
- Separator Assembly ; Valve Bed: Epoxy resin coating (at edge face)
- Screws (used outer side): Zinc nickel coating 5µm + Polyvinylidene chloride coating

“Blue Fin” treatment is an anti-corrosion treatment that is applied to the condenser coil to protect it against airborne contaminants..



COOLING & HEATING

1340 Satellite Boulevard, Suwanee, GA 30024
Toll Free: 800-433-4822 www.mehvac.com

