



Applications Guide BAC-5051E router



Includes installation, operation, and maintenance instructions

Copyrights and trademarks

©2018, KMC Controls, Inc.

NetSensor, WinControl, and the KMC logo are registered trademarks of KMC Controls, Inc.

AppStat, BACstage, FlexStat, FullBAC, KMC Connect, KMC Connect Lite, KMC Converge, KMC Converge GFX, KMC Conquest, TotalControl, SimplyVAV, and the SimplyVAV logo are trademarks of KMC Controls, Inc.

All rights reserved. No part of this publication may be reproduced, transmitted, transcribed, stored in a retrieval system, or translated into any language in any form by any means without the written permission of KMC Controls, Inc.

Printed in U.S.A.

The material in this manual is for information purposes only. The contents and the product it describes are subject to change without notice. KMC Controls, Inc. makes no representations or warranties with respect to this manual. In no event shall KMC Controls, Inc. be liable for any damages, direct or incidental, arising out of or related to the use of this manual.

Handling precautions

To prevent damage from electrostatic discharges, take reasonable precautions when handling, servicing, or installing the router. Discharge accumulated static electricity by touching your hand to a securely grounded object before working with the router.



KMC Controls, Inc.

19476 Industrial Drive

New Paris, IN 46553

U.S.A.

TEL: 1.574.831.5250

FAX: 1.574.831.5252

info@kmccontrols.com

Contents	3
Section 1: Introduction	5
Specifications	5
Accessories and replacement parts	7
Mounting the router	8
Connecting for network routing	8
MS/TP network wiring	9
MS/TP EOL (End-Of-Line) termination switches	9
Connecting power	9
Single-cable connection	11
Maintenance	12
If you encounter difficulty	12
Safety considerations	12
Using the router for a technician's service tool	13
Section 2: Configuring the BAC-5051E router	15
Initial setup	15
Set up for configuration	16
Logging in	16
Changing your computer's address	18
Device properties page	21
Time page	22
BACnet Time Sync Networks	23
SNTP Time Server	24
Daylight Saving Time	24
Security page	24
Session timeout	26
Section 3: Setting up routing	27
BACnet IP routing	27
BACnet foreign device routing	28
BACnet Broadcast Management Device routing	30
Network address translation	31
Table	31
BACnet PAD routing	32
BACnet Ethernet routing	33
MS/TP configuration	34
Router Core properties page	35
Home Port	35
Routing properties	36
Section 4: Diagnostics and status	37
Routing Status page	37
Route Status buttons	38
Route Status list	39
Purging the Route Status list	41
Device Status page	42
Token Use page	44
MS/TP Metrics page	46
Interpreting the diagnostic data	46

Description of the Metrics page48

MS/TP Capture page49

Section 5: Advanced features 51

 Recovering the network address51

 Updating the firmware53

 Configure from a file54

 VAV balancing and configuration55

 VAV balancing55

 Configuring VAV setpoints56

 Commanding and monitoring airflow57

Index59

Section 1: Introduction

This section provides a description of the KMC Controls BAC-5051E router. It also introduces safety information. Review this material before installing or operating the router.

The KMC Controls BAC–5051E is a multi-port BACnet router. Router highlights are:

- Easy to install and simple to configure.
- Configured from internally served web pages.
- Internal network diagnostics and route status reports.

Topics in this section

Specifications	5
Accessories and replacement parts	7
Mounting the router	8
Connecting for network routing	8
Connecting power	9
Single-cable connection	11
Maintenance	12
If you encounter difficulty	12
Safety considerations	12
Using the router for a technician's service tool	13

Specifications

Specifications are subject to change without notice.

Communication ports

BACnet Ethernet and IP

10BaseT/100BaseT, RJ–45 connector

BACnet MS/TP

- One optically isolated MS/TP port, 9.6–115.2 kilobaud
- Removable three-screw terminal block, 12–22 AWG wire
- Switched end-of-line termination

USB

USB micro B connection for temporary power

Configuration and software

All configuration is through internal browser based configuration pages. Requires HTML5 browser.

BACnet routing

BACnet IP—Two ports each of that can be set up for any of the following protocols:

- Normal BACnet IP network routing
- BACnet broadcast management device with network and port address translation
- Foreign device registration with BACnet broadcast management devices (BBMD)
- PAD (packet assembling/disassembling) routing

One BACnet Ethernet port

One MS/TP port

Installation

Supply voltage	24 VAC (50/60 Hz) or 24 VDC; –15%, +20%; Class 2 only; non-supervised (all circuits, including supply voltage, are power limited circuits) 5 volts DC from powered USB connection Supply source automatically switches to highest available voltage 8 VA required power
Weight	Approximately 5.3 ounces (149 grams)
Case material	Green and black flame retardant plastic

Processor and memory

Processor	Processor 32-bit ARM® Cortex-M4
Memory	Configuration parameters and diagnostics are stored in nonvolatile memory; auto restart on power failure

Regulatory and agency listings

BTL	Listed as BACnet Testing Laboratory profile B-RTR.
UL	UL 916 Energy Management Equipment
RoHS	RoHS compliant (pending)
CE	CE compliant
FCC	FCC Class A, Part 15, Subpart B and complies with Canadian ICES-003 Class A This device complies with part 15 of the FCC Rules. Operation is subject to the following two conditions: (1) This device may not cause harmful interference, and (2) this device must accept any interference received, including interference that may cause undesired operation.

Environmental limits

Operating Temperature 32 to 120° F (0 to 49° C)

Shipping Temperature -40 to 140° F (–40 to 60° C)

Humidity 0–95% RH, non-condensing

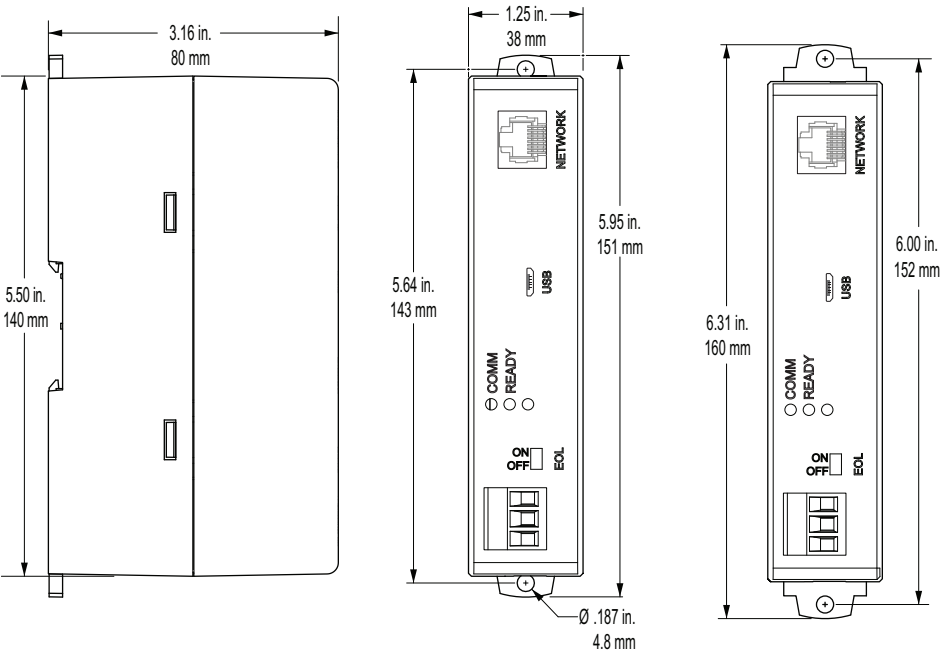
Timekeeping

The BAC-5051E router is a BACnet time master device.

Update interval	Daily, weekly, or monthly
Time message type	UTC, local, or both
Setting time	Synchronized to SNTP server, set from computer time, or manually entered

Dimensions and mounting

Surface mount or 35 x 7.5 mm DIN rail mounting



Accessories and replacement parts

The following accessories and replacement parts are available from KMC Controls, Inc.

Power transformer

XEE-6111-50	Transformer, 120-to-24 VAC, 50 VA, single-hub
XEE-6112-50	Transformer, 120-to-24 VAC, 50 VA, dual-hub

Surge suppressors

KMD-5567	EIA-485 surge suppressor for MS/TP or Tier 2 networks
--------------------------	---

Cables

HPO-5551	Conquest Router Tech Cable Kit– Includes USB, Ethernet, and MS/TP to NetSensor cables
HSO-9001	Ethernet cable, 50 feet
HSO-9011	Ethernet cable, 50 feet, plenum rated

Replacement parts

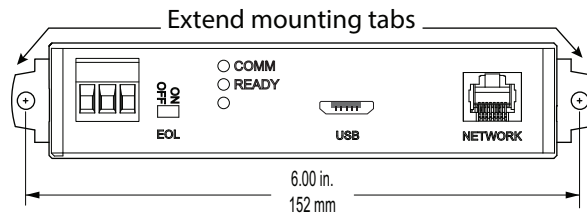
HPO-9901	Controller replacement parts kit with terminal blocks and DIN clip
--------------------------	--

Mounting the router

For permanent installations, the router can be flush mounted or snapped to a 35 x 75 mm DIN rail. For router dimensions, see the topic [Specifications on page 5](#).

Surface mounting Extend the mounting tabs away from the router body and fasten with screws.

Illustration 1-1 Surface mounting the router



DIN rail mounting Mount the DIN rail and then do the following:

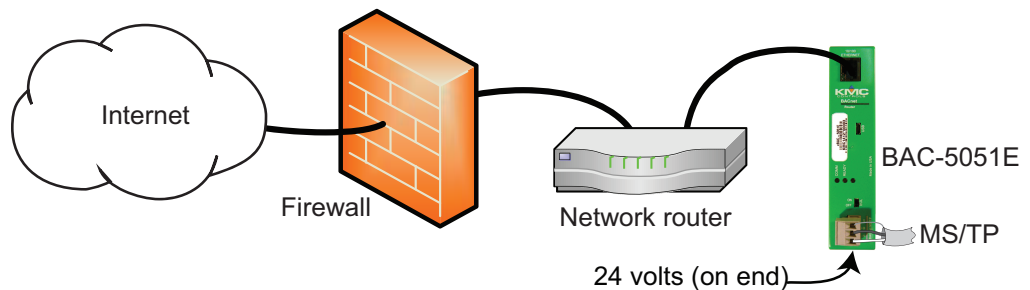
- 1 Extend the mounting tabs.
- 2 Place the bottom of the router over the DIN rail.
- 3 Push the mounting tabs back toward the router body to lock it to the rail.

Connecting for network routing

For permanent installations, connect the BAC-5051E router to a network router or network switch and an MS/TP network. For permanent installations, the router is typically connected to a 24 volt transformer for power.

For installations that include Internet access, install the router behind a firewall.

Illustration 1-2 Permanent installation



See also the following topics:

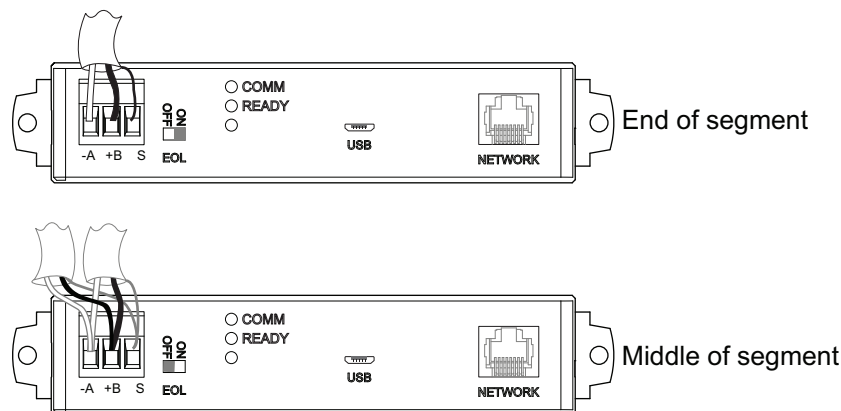
- [Mounting the router on page 8](#)
- [Connecting power on page 9](#)

MS/TP network wiring

Use the following principles when connecting the router to an MS/TP network:

- Connect no more than 128 BACnet devices to one MS/TP network. The devices can be any mix of masters, slaves, or routers.
- Use twisted pair, shielded cable with capacitance of no more than 51 picofarads per foot for all network wiring. Belden cable #82760 or equivalent meets the requirements.
- Connect the $-A$ terminal in parallel with all other $-$ terminals.
- Connect the $+B$ terminal in parallel with all other $+$ terminals.
- Connect the shields of the cable together at each mid line device. For KMC BACnet devices use the S terminal.
- Connect the shield to an earth ground at one end only.
- Use a repeater between every 32 MS/TP devices or if the cable length exceeds 4,000 feet (1,220 meters). Use no more than four repeaters per MS/TP network.
- Place a KMD-5567 surge suppressor in the MS/TP cable where it exits a building.

Illustration 1–3 MS/TP wiring



MS/TP EOL (End-Of-Line) termination switches

The controllers on the physical ends of the MS/TP wiring segment must have end-of-line termination added for proper network operation.

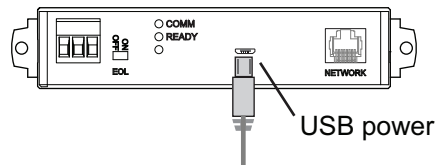
- If the router is at the end of the network segment, set the EOL switch to *ON*.
- If the router is in the middle of the network segment, set the EOL switch to *OFF*.

Connecting power

Power the BAC-5051E router from a 24 volt power source, either AC or DC, or from a USB connection. The router begins to operate when a power source is applied. Use the following guidelines when choosing and wiring sources to the router.

For USB power Connect the router to a powered USB port with a USB A to USB micro B cable. Typically the USB ports on laptop computers can supply power to the router. When connecting to a USB hub, verify the power specifications of the hub. See the topic [Specifications on page 5](#).

Illustration 1-4 USB connection

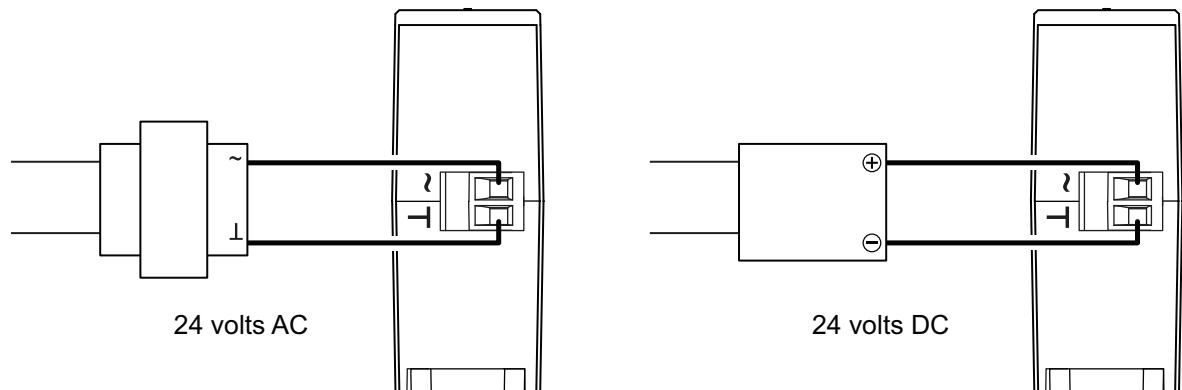


Note: When using USB connection for power and communications, use the USB cable from the HPO-5551 Technician's Router Cable Kit. The cable from the kit is specified to supply enough power for both the USB and the network connection.

To use the USB for power and network communications, see the topic [Single-cable connection on page 11](#).

For permanent installations, the router is usually powered from a 24 volt transformer or DC power supply.

Illustration 1-5 24 volt power connections



For 24 volt AC power Connect a 24 volt transformer to the black power terminal block on the end of the router.

- Connect the AC phase to the phase terminal ~.
- Connect the ground side of the transformer to the ground terminal ⊥.
- Use a Class 2 transformer of the appropriate size to supply power to the router.
- KMC Controls recommends powering the router from a dedicated transformer.
- Do not run 24 volt power from within an enclosure to external devices.

For 24 volt DC power Connect a 24 volt power supply to the black power terminal block on the end of the router.

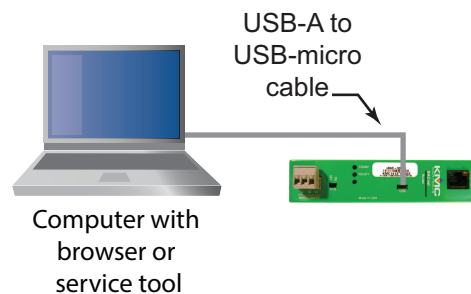
- Connect the positive terminal (+) to the phase terminal ~.
- Connect the negative terminal (-) of the power supply to the ground terminal \perp .
- Use a Class 2 power supply of the appropriate size to supply power to the router.
- KMC Controls recommends powering the router from a dedicated power supply.
- Do not run 24 volt power from within an enclosure to external devices.

Single-cable connection

The single-cable connection method connects the BAC-5051E router to a computer with a USB cable that supplies both power and communications. The USB port becomes a virtual network interface card (NIC) and establishes a network between the computer and the router.

Note: Use the USB cable from the HPO-5551 Router Technician's Cable kit for a single cable connection. This cable meets the specification to supply the power and communications required by the router. Other cables may prevent routing on one or more ports.

Illustration 1-6 Single-cable connection



To set up a single-cable connection, do the following:

- 1 Plug the USB cable from the HPO-5551 cable kit into the router.
- 2 Plug the other end of the USB cable into the computer.

Depending on the version of Windows, the first time the router is plugged into a computer, Windows will display a message that it is installing a new driver. Click on the message to see more details. Note the name of the device in the message because you will need this information in later steps. Allow the installation to finish and then close the dialog.

- 3 From the Windows Control Panel, click **Network and Internet** and then **Networking Sharing Center**.
- 4 Once the center is open, click **Change Adaptor Settings**.
- 5 Identify the Local Area Connection that is associated with the router and click it to open the connection.
- 6 In the Local Area Connection status, click **Properties**.

- 7 When the next dialog opens, choose **Internet Protocol Version 4** and then click **Properties**.
- 8 In the Properties dialog, select **Use the following IP address** and then enter a unique IP address and subnet mask.
 - The IP address must be unique and be part of the same subnet as the router's address.
 - If the router is still configured with the default address, use 192.168.1.252.
 - Set the subnet mask to 255.255.0.0.
- 9 When finished, click **OK** to save the work and then close all dialog boxes.

To test the connection, do the following:

- 1 Open a browser window.
- 2 Enter the address of the router.
- 3 When the log in page opens, set up the router as described in the topic [Setting up routing on page 27](#).

See also the topic, [Using the router for a technician's service tool on page 13](#).

Maintenance

The BAC-5051E router requires no routine maintenance. If necessary, clean with a damp cloth and mild soap.

If you encounter difficulty

If you experience difficulty with the BAC-5051E router, KMC Controls provides the following assistance.

The KMC Controls web site Navigate to the support section on the KMC controls web site for the latest information for BAC-5051E router and other KMC Controls products.

www.kmcccontrols.com

KMC technical support Our distribution partners have unlimited and free access to our team of Technical Support representatives. We provide coast-to-coast and toll-free support from 8:00 AM Eastern to 5:00 PM Pacific time.

Toll-Free Technical Support: (866) 303-4562

Safety considerations

KMC Controls, Inc. assumes the responsibility for providing you a safe product and safety guidelines during its use. Safety means protection to all individuals who install, operate, and service the equipment as well as protection of the equipment itself. To promote safety, we use hazard alert labeling in this manual. Follow the associated guidelines to avoid hazards.



Caution indicates potential personal injury or equipment or property damage if instructions are not followed.

Note: Provides additional information that is important but may be missed.

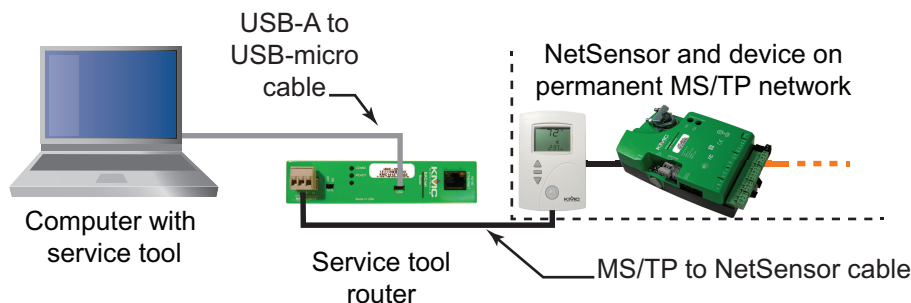
Tip: Provides programming tips and shortcuts that may save time.

Using the router for a technician's service tool

To use the BAC-5051E router as a technician's service tool, connect it between a computer running a service tool program and a BACnet internetwork. Use the following cables from the HPO-5551 Router Technician's Cable kit to make the connections.

- The MS/TP to NetSensor cable
- The USB-A to USB-micro cable

Illustration 1-7 Router service tool connection



KMC Connect, TotalControl, BACstage, or other BACnet configuration program may be used for the service tool program

Computer requirements The computer running the service or configuration program must have a BACnet driver installed and configured to match a port in the service tool router. The program also requires a unique Device Instance number assigned to the BACnet driver. The exact details for setting up the driver vary with each program.

Router set up Using the router for service connection requires that the router is set up with a unique device instance and network number between the computer and router. The network between the computer and router may be one of the IP protocols or the Ethernet protocol. Typically, the normal IP protocol is used when the router is connected between a computer and an MS/TP network.

- See the topic [Setting up routing on page 27](#) for details on configuring the router's ports for BACnet networks.
- Setting the device instance number is described in the topic [Device properties page on page 21](#).

To set up the router for a service connection, do the following:

- 1** Set up the computer and router for a single cable connection as described in the topic [Single-cable connection](#) on page 11.
- 2** Connect the MS/TP to NetSensor cable between the router and the bottom of a NetSensor or STE-6000 sensor with a network port.
- 3** Assign a unique device instance number and network number to the service tool program.
- 4** Log in to the router with an HTML5 browser.
- 5** Assign a unique device instance number to the router.
- 6** Enable a port in the router for BACnet network.
 - The protocol for the port, either IP or Ethernet, in the router must match the protocol used by the service tool program.
 - The BACnet network number assigned to the port must be unique on the BACnet internetwork.
- 7** Enable the MS/TP port in the service tool router.
 - Set the MS/TP network number in the router service tool to match the network number that the devices on the building's network are using.
 - Set the MS/TP MAC in the router that is unique on the MS/TP network.
 - Set the baud rate to match the baud rate of the building's MS/TP network.
- 8** Start the service tool program. The BACnet devices on the internetwork will be available for discovery. If it is a large internetwork, it may take a few minutes to discover all devices.

Section 2:

Configuring the BAC-5051E router

This section provides important guidelines for configuring a router before it is placed on a network. Review this information carefully for proper installation.

The router must be configured as a network device. To prevent disrupting an existing network, configure the network address before connecting the router to the network. The BACnet device instance and other properties can be configured at the same time or after the router has an IP address assigned and it is installed in its permanent location on a network.

Topics in this section

Initial setup	15
Device properties page	21
Time page	22
Security page	24
Session timeout	26

Initial setup

Configure the BAC-5051E router with an HTML5 compatible web browser using the web pages served from within the router. The router has the following default network address values.

- IP address—192.168.1.252
- Subnet mask—255.255.255.0
- Gateway—192.168.1.1

You will need the following information before you can configure a router.

From the BACnet system engineer:

- BACnet device instance for the router.
- Network numbers for each of the enabled networks.
- If applicable, the address and port for a PAD router or BBMD to which the router will connect.
- A MAC address for the MS/TP port.
- The highest MAC address used on the MS/TP network.
- The baud rate for the MS/TP network.

From the IT system administer:

- The IP address for the router.
- The IP subnet mask for the Ethernet LAN to which the router will connect.
- The IP address of the network gateway.

- If the router is part of a system that uses the Internet, you will also need the public IP address and port.

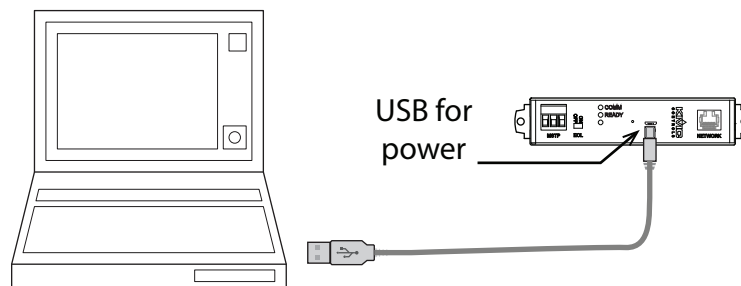
You will also need an HTML5 compliant browser, Ethernet cable, and a USB-A to USB-B micro cable or a 24 volt AC power source.

Set up for configuration

To configure the router, plug it into an Ethernet port. Typically this is a direct connection to a computer Ethernet connection which requires changing the computer IP address. See the procedure [Changing your computer's address on page 18](#).

In addition to the Ethernet connection, supply temporary power to the router with a USB cable. An alternative to the USB power connection is a 24 volt AC source. See [Connecting power on page 9](#).

Illustration 2-1 Connecting for configuration

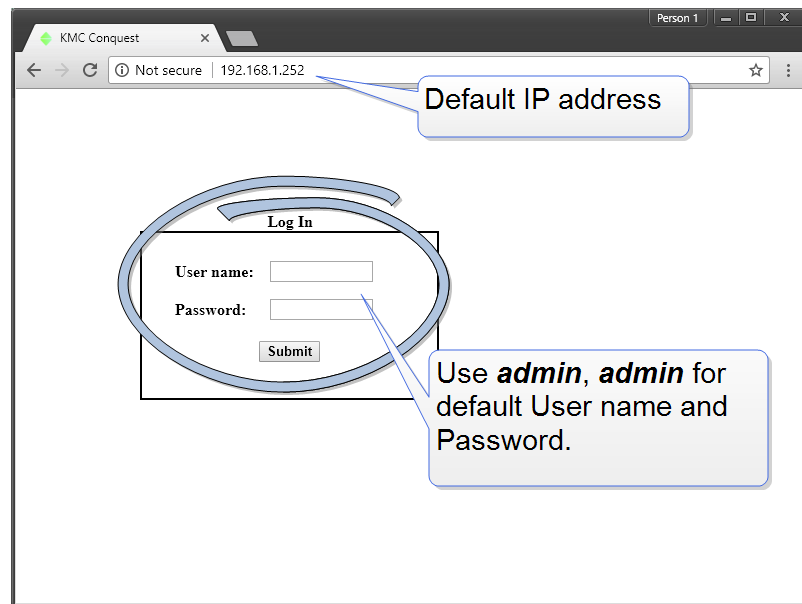


Logging in

Use an HTML5 browser to log in and configure the router.

To log in, do the following.

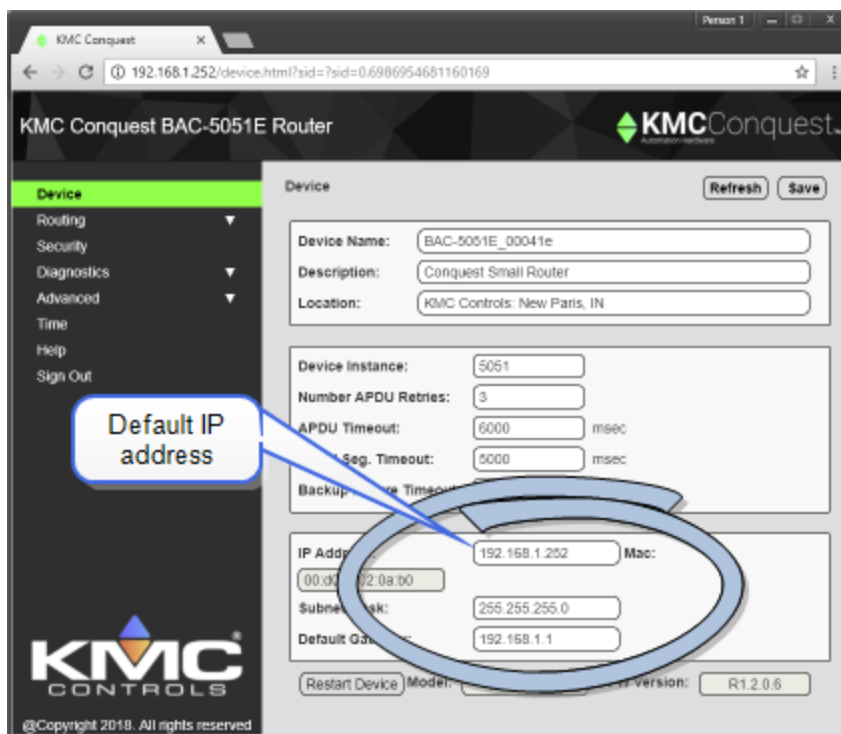
- 1 Connect the router to an Ethernet port by doing one of the following.
 - Connect directly to the computer.
 - Connect to a subnet that recognizes address 192.168.1.252.
- 2 Connect the router to either USB or 24 volt AC power.
- 3 Open a new browser window.

4 Enter the address **192.168.1.252**.**5** At the log in window enter the following user name and password.

- User name: **admin**
- Password: **admin**

- 6 Once you have logged in, other parameters of the router can be changed from the Home page.
 - To change the IP address, see the topic [Device properties page](#) on page 21.
 - To set up BACnet routing, see the topic [Setting up routing](#) on page 27.
 - To change passwords and add users, see the topic [Security page](#) on page 24.

Note: Once you change the IP address, place the router on the new subnet and log in using the new address. After the address is changed and saved, the router will not respond to the old address.

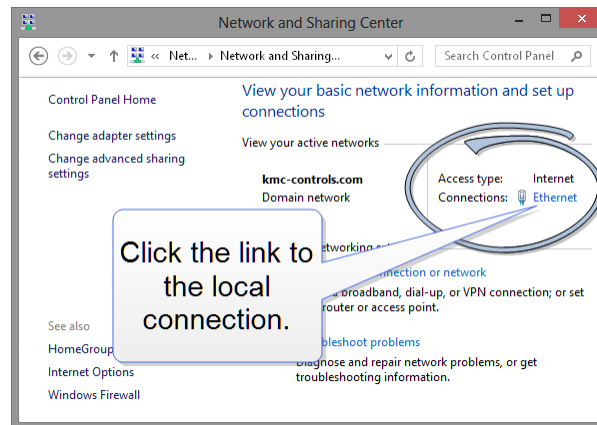


Changing your computer's address

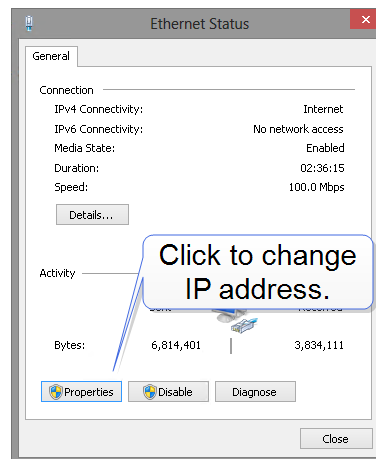
To directly connect a computer to a router, you must set the IP address of the computer to be compatible with the IP address of the router.

- 1 From the Windows Control Panel, click **Network and Internet** and then **Networking Sharing Center**.

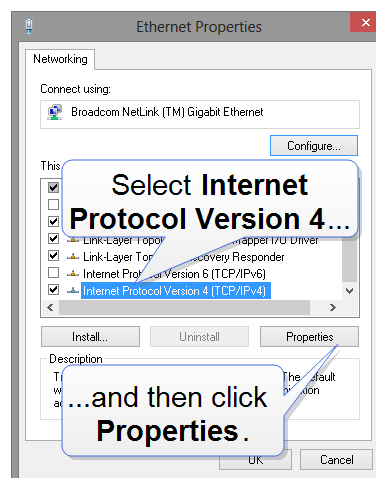
- 2 Choose the local connection for the LAN. Depending on the computer and version of Windows, the exact name for the connection may be *Ethernet*, *Local Area Connection*, or something similar.



- 3 In the Ethernet Status dialog, click **Properties**.

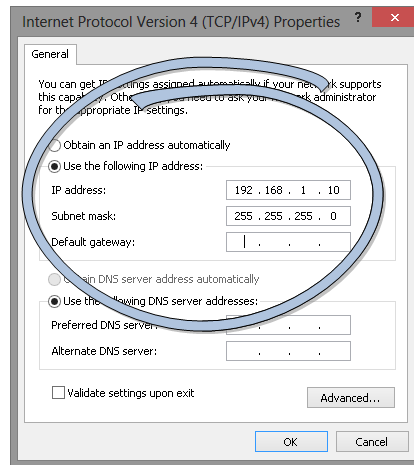


- 4 In the Ethernet Properties dialog, scroll and select **Internet Protocol Version 4 (TCP/IP)** and then click **Properties**.



5 In the Properties dialog, select **Use the following IP address** and then enter the following for the IP address, subnet mask, and Gateway.

- IP address—192.168.1.10
- Subnet mask—255.255.255.0
- Gateway—Leave empty or unchanged



6 When all information is correct, click **OK**.

Device properties page

The Device page identifies the BAC-5051E router for the Local Area Network (LAN). The IP Address, Subnet Mask, and Default Gateway values are supplied by the IT department system administrator.

The Device page also identifies the router as a BACnet device and sets BACnet communication properties. The default device instance for the router is 5051.

Note: Once the window is saved, the router will use the new settings and will require you to log in at the new address. If the router is not on the same subnet as the network gateway router, it will not function correctly.

Note: The Device Instance on this page identifies the BAC-5051E router as a BACnet device but not KMD controllers as BACnet devices. See the topics [Configuring the KMD Virtual Port](#) and [KMD Subnet Device Configuration page](#).

The screenshot displays the KMC Conquest BAC-5051E Router configuration interface. The left sidebar shows the 'Device' tab selected. The main configuration area includes the following fields:

- Device Name:** BAC-5051E_00041e
- Description:** Conquest Small Router
- Location:** KMC Controls, New Paris, IN
- Device Instance:** 5051
- Number APDU Retries:** 3
- APDU Timeout:** 6000 msec
- APDU Seg. Timeout:** 5000 msec
- Backup Failure Timeout:** 600 sec
- IP Address:** 192.168.1.252
- Mac:** 00:00:6f:02:0a:b0
- Subnet Mask:** 255.255.255.0
- Default Gateway:** 192.168.1.1
- Restart Device:** (button)
- Model:** BAC-5051E
- FW Version:** R1.2.0.6

Device Name The name must be unique among all devices on the BACnet internetwork.

Description Optional information not included in the device name.

Location An optional value that describes the router's physical location.

Device Instance A number that identifies the router on the internetwork. The device instance must be unique on the internetwork and in the range from 0 to 4,194,302. The device instance is assigned by the BACnet system designer. The default device instance is 5051.

Number APDU Retries Indicates the maximum number of retries that an APDU is retransmitted.

APDU Timeout Indicates the time—in milliseconds—between retransmissions of an APDU requiring an acknowledgment for which no acknowledgment has been received.

APDU Seg. Timeout The Segment Timeout property indicates the time—in milliseconds—between the retransmission of an APDU segment.

Backup Failure Timeout The time—in seconds—that the router must wait before ending a BACnet backup or restore procedure. Use a BACnet Operator Workstation such as KMC Connect or TotalControl to backup the router.

IP Address The internal or private network address of the router. For BACnet routing that requires a public IP address, see [Setting up routing on page 27](#).

Subnet Mask Mask determines which part of the IP address is used for a network identifier and which part is used for a device identifier. The mask must match the mask for the network gateway router and other devices on the subnet.

Default Gateway The address of the network gateway router. The BAC-5051E router and gateway router must be part of the same LAN subnet.

Restart Device Restarts the router. Similar to restarting the router with a BACnet cold start from KMC Connect or TotalControl. A restart does not change properties or save changes not yet saved.

MAC The MAC (Media Access Control) address uniquely identifies the router on the local area network. This number is assigned by the manufacturer and cannot be changed.

Time page

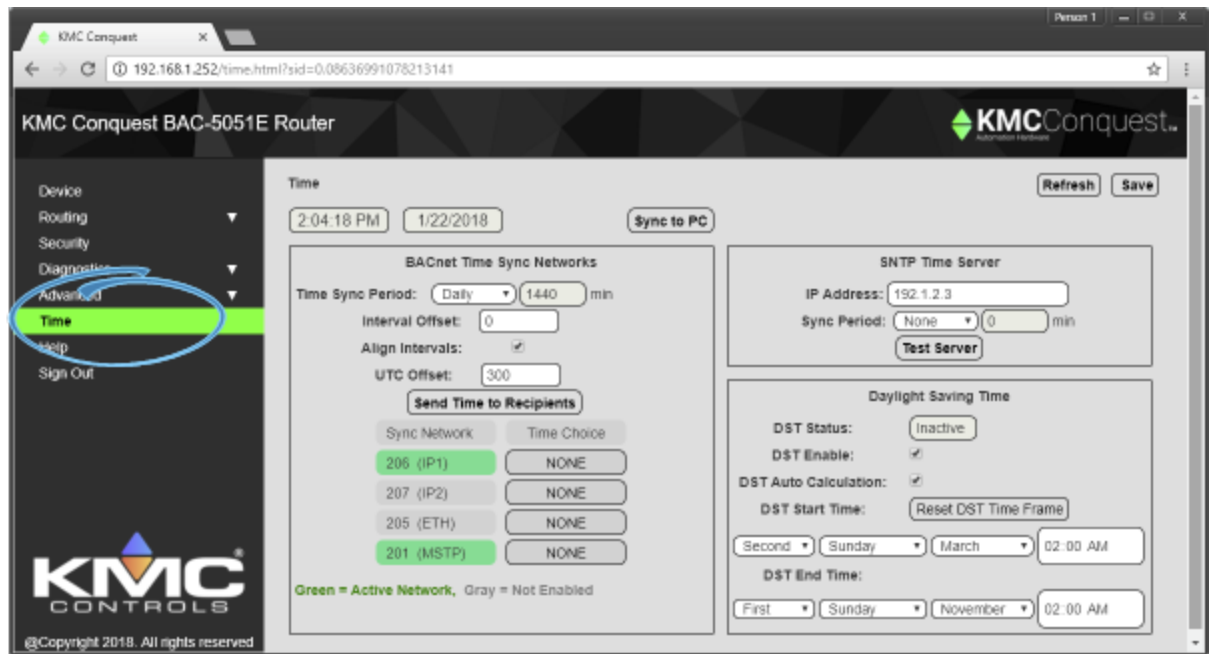
Set the properties of the Time page to set up the router as a BACnet time master device.

Time The local time and date as maintained by the router is displayed at the top of the web page. Time and date can be entered directly or synchronized to the time in the computer running the browser.

Sync to PC Click to immediately transfer the time and date maintained by the computer running the browser to the router.

Refresh Clicking **Refresh** discards any changes and reloads router properties on the web page.

Save When finished making changes, click Save to make the changes permanent.



BACnet Time Sync Networks

Selects the interval and type of BACnet time message for each network.

Time Sync Period Sets the interval to send time synchronization to the selected BACnet networks. The choices are None, Daily, Weekly, Monthly, or Custom. The Custom interval is entered in minutes.

Interval Offset If Align Intervals is selected, the time synchronization messages are offset, in minutes, from the beginning of the hour or day.

Align Intervals If selected and a Time Sync Period is specified, time synchronization messages are sent at the start of the hour or day.

UTC Offset The UTC Offset property indicates the time offset—in minutes—between local standard time and Universal Time Coordinated. The value of the property ranges from -780 to +780 minutes. The time zones to the west of the zero degree meridian are positive values; those to the east are negative values. The value of the UTC Offset property is derived from the UTC received in a UTC Time Synchronization service request to calculate the correct local standard time.

Sync Network Enabled networks are indicated with a green background. To enable a network, see the topic [Setting up routing on page 27](#).

Time Choice Sets the type of time synchronization to NONE, UTC, LOCAL, or UTC & LOCAL. The router supports both UTC and local time synchronization.

- **UTC** The router sends time sync messages in Universal Time Coordinated (UTC). The devices on the network then apply an offset to calculate local time and date. UTC is the preferred method when the building automation system crosses time zones.
- **Local time** The router sends time sync messages in local time from which devices update their internal clock.

Send Time To Recipients When clicked, the router immediately sends a BACnet time service message to the designated networks.

SNTP Time Server

A Simple Network Time Protocol Server is a network device that synchronizes the time for devices connected to a local area network. The router receives these time messages and rebroadcasts them as BACnet time service messages.

IP Address Enter the address of the SNTP server. The address is supplied by the IT department.

Sync Period Select an hourly, daily, weekly, monthly, or a custom interval to send the time synchronization message. The custom period is set in minutes.

Test Server Click to test the connection to the network SNTP server.

Daylight Saving Time

DST Status This property indicates *ACTIVE* when Daylight Saving Time is in effect and *INACTIVE* when it is not in effect.

DST Enable Enables the router to change its time to Daylight Saving Time. The period of Daylight Saving Time is defined by DST Start Time and DST End.

DST Auto Calculation Selecting this check box sets the type of Daylight Saving Time calculation. When selected, the router uses a rules-based calculation for DST based on the day of the month in DST Start Time and DST End Time. When this check box is clear, DST is set to specific calendar dates.

DST Start Time Enter the day and time that starts Daylight Saving Time.

DST End Time Enter the day and time that ends Daylight Saving Time.

Security page

The Security page sets user access to the router. Assign users to one of the five access levels.

- The user name list must include at least one name with Administrator privileges.
- User names and passwords are case sensitive.
- Only the Custom access level can be changed.

The router is configured with the following default user name and password.

- User name: **admin**
- Password: **admin**

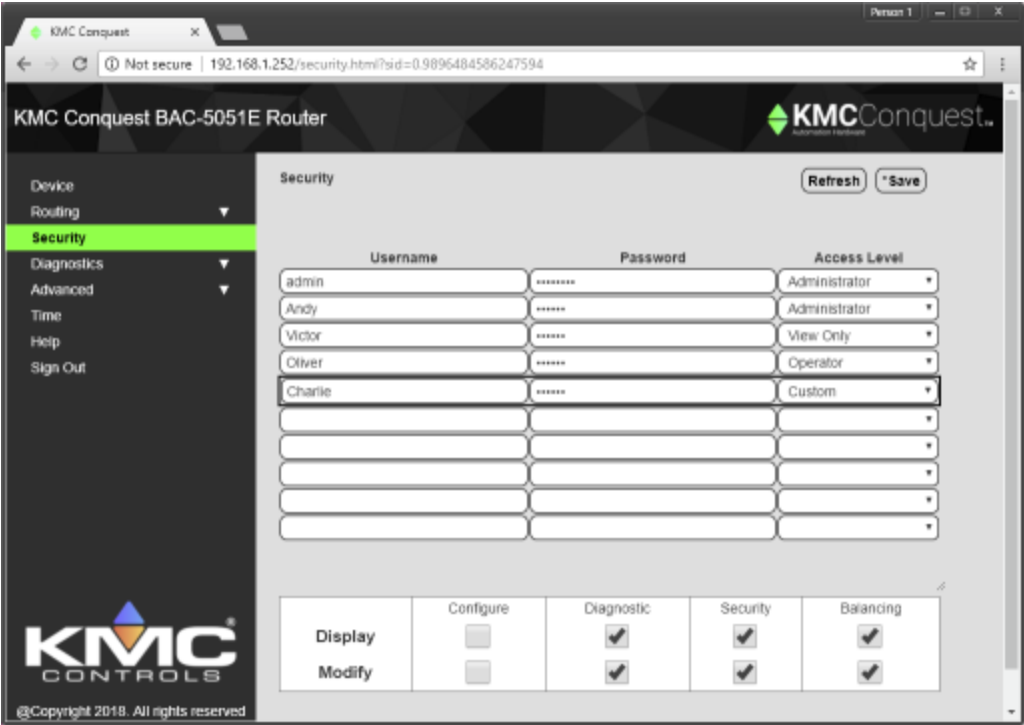


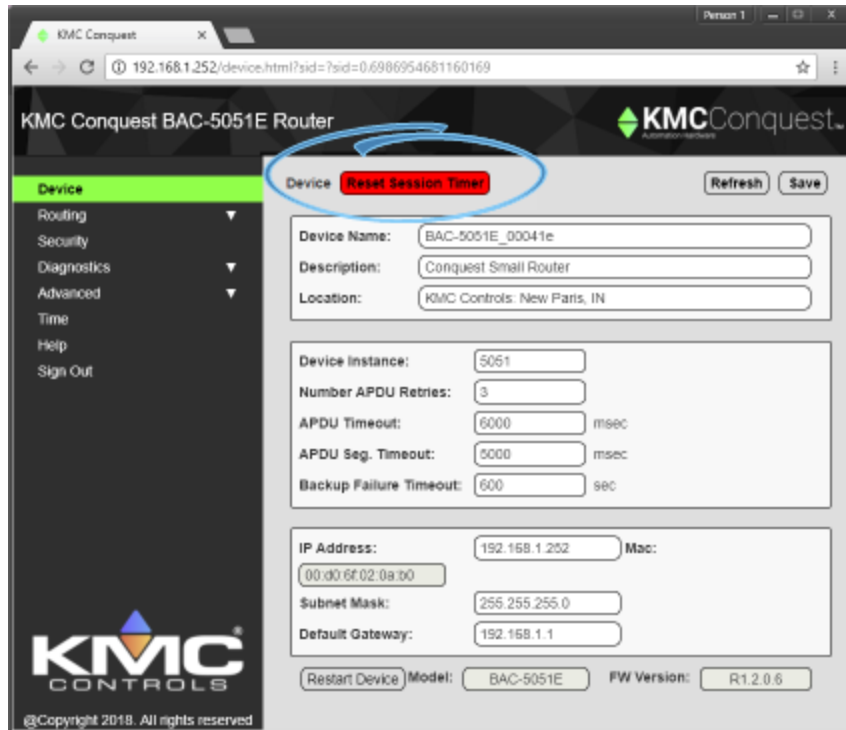
Table 2-1 Security access levels

	Configure	Diagnostic	Security	Balancing
Administrator	Display Modify	Display Modify	Display Modify	Display Modify
View Only	Display	Display		
Operator	Display Modify	Display Modify		
Balancing				Display Modify
Custom	Display* Modify*	Display* Modify*	Display* Modify*	Display* Modify*

*Assigned as required.

Session timeout

The browser session will automatically close after one hour of inactivity. After 58 minutes, the Reset Session Timer button appears on any open page. Click to reset the session timer.



Section 3: Setting up routing

This section provides important guidelines for configuring a KMC BAC-5051E router for BACnet routing. Review this information carefully for proper installation.

The BAC-5051E supports the following routing protocols.

- One MS/TP network
- One BACnet Ethernet
- Two IP networks that can be set up for any of the following protocols:
 - Normal BACnet IP network routing
 - BACnet broadcast management device with network and port address translation
 - Foreign device registration with BACnet broadcast management devices (BBMD)
 - PAD (packet assembling/disassembling) routing

Setting up routing can be performed either during initial configuration or after the router has an IP address assigned and is installed in its permanent location. See [Configuring the BAC-5051E router on page 15](#) for initial configuration and log in procedures.

Topics in this section

BACnet IP routing	27
BACnet foreign device routing	28
BACnet Broadcast Management Device routing	30
BACnet PAD routing	32
BACnet Ethernet routing	33
MS/TP configuration	34
Router Core properties page	35

BACnet IP routing

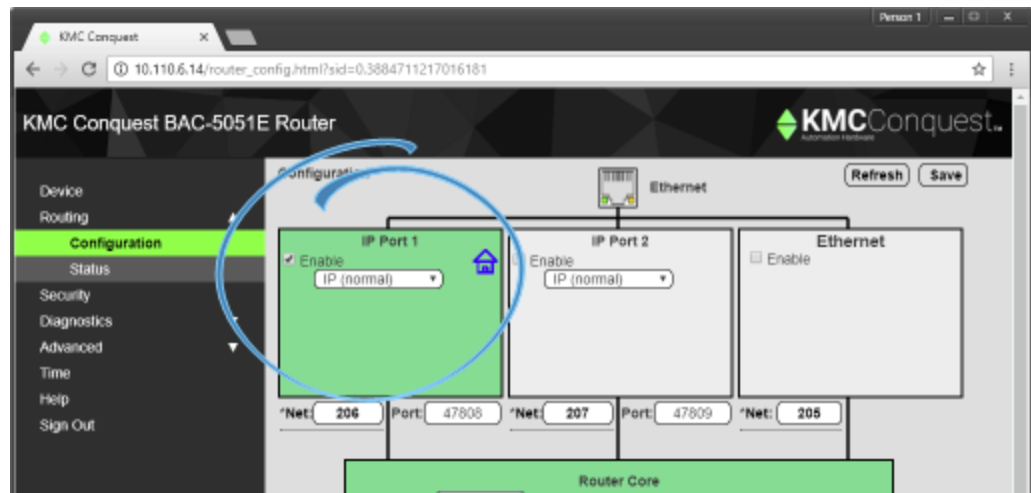
Either of the two IP ports can be configured for normal IP routing. The values on this page are assigned by the BACnet system engineer.

For the log in procedure, see the topic [Initial setup on page 15](#).

- 1 Use an Internet browser to log in.
- 2 Click **Routing** and then **Configuration**.
- 3 Select **Enable** for one of the IP Ports.
- 4 Select **Enable** for the IP Port.
- 5 From the list box, choose **IP (Normal)**.

- 6 Set the Network and Port properties as needed and then click **Save**.

Note: The router will restart when changes are made. For additional changes, log in again.



Enable Select to enable the network. The port block turns green when enabled.

Port Assign a unique UDP port number to each of the enabled IP networks. The default port number is 47808.

Net Designates the BACnet network number for the port. Assign network numbers in the range from 1 to 65534.

Other IP routing protocols

- [BACnet Broadcast Management Device routing on page 30](#)
- [BACnet PAD routing on page 32](#)
- [BACnet foreign device routing on page 28](#)
- [Router Core properties page on page 35](#)

BACnet foreign device routing

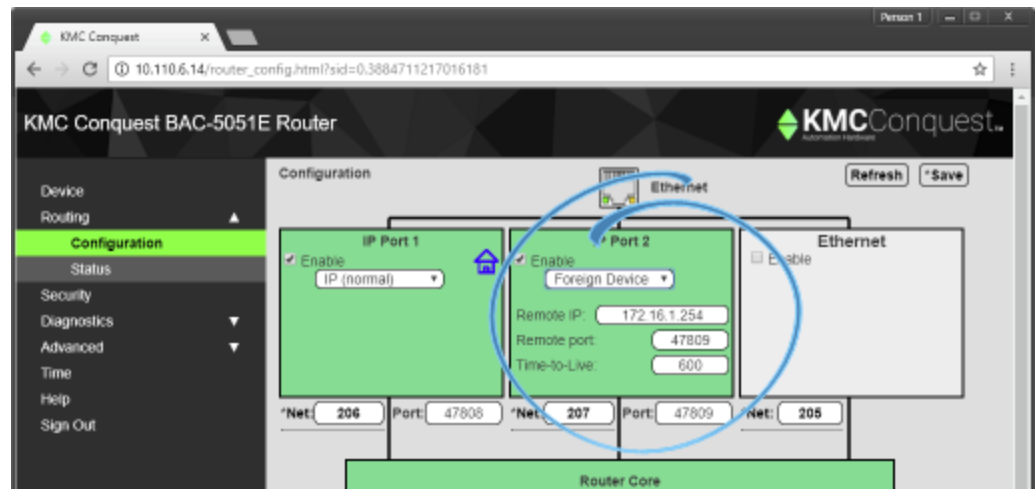
Either of the two IP ports can be configured as a BACnet Foreign device. The values on this page are assigned by the BACnet system engineer.

For the log in procedure, see the topic [Initial setup on page 15](#).

- 1 Use an Internet browser to log in.
- 2 Click **Routing** and then **Configuration**.
- 3 Select **Enable** for the port.
- 4 From the list box, choose **Foreign Device**.

- 5 Set other properties as needed and then click **Save**.

Note: The router will restart. For additional changes, log in again.



Enable Select to enable the network. The port block turns green when enabled.

Net Designates the BACnet network number for the port. Assign network numbers in the range from 1 to 65534.

Port Assign a unique UDP port number to each of the enabled IP networks. The default port number is 47808.

Remote IP Enter the address of the remote BBMD. If network address translation (NAT) is used between the BAC-5051E router and the BBMD, contact the network system administrator for the correct public IP address.

Remote Port Enter the port number of the remote BBMD. If port address translation (PAT) is used between the BAC-5051E router and the BBMD, contact the network system administrator for the correct public UDP port.

Time To Live Sets the interval at which the router sends a registration message to the BBMD with which it is registered. The valid time range is 1-65535 seconds.

If the BBMD does not receive a registration message within the value of the period set by Time To Live plus 30 seconds, the BBMD will remove the router from its foreign device table and will not send broadcast messages to the router.

Other IP routing protocols

- [BACnet IP routing](#) on page 27
- [BACnet Broadcast Management Device routing](#) on page 30
- [BACnet PAD routing](#) on page 32
- [Router Core properties](#) page on page 35

BACnet Broadcast Management Device routing

Either of the two IP ports can be configured as a BACnet Broadcast Management Device (BBMD). When configuring an IP port as a BBMD, keep in mind the following rules.

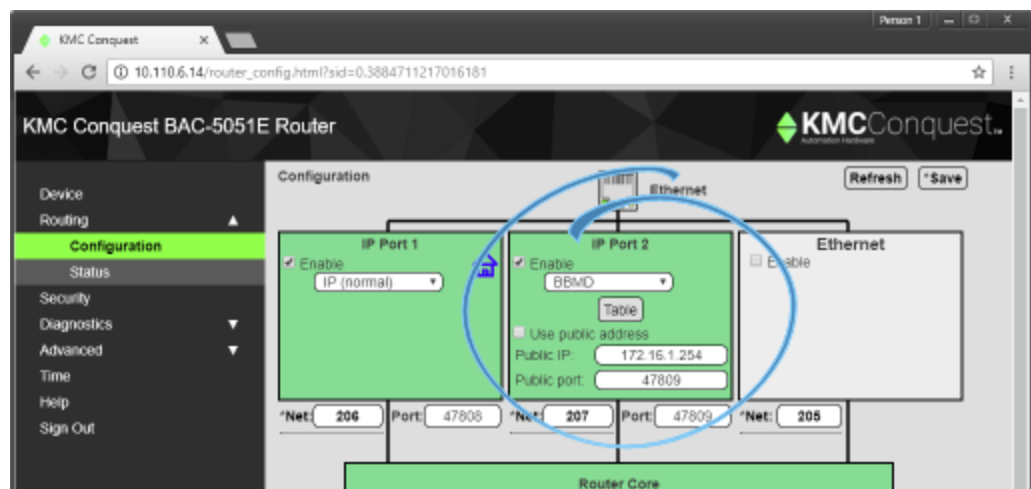
- Configure only one BBMD for a single IP subnetwork.
- Assign the same BACnet network number to all BBMDs on the internetwork.
- The BBMD can accept registration from foreign devices or perform BBMD-to-BBMD routing.

For the log in procedure, see the topic [Initial setup on page 15](#).

To set up the router as a BBMD, do the following:

- 1 Use an Internet browser to log in.
- 2 Click **Routing** and then **Configuration**.
- 3 Select **Enable** for the port.
- 4 From the port list box, choose **BBMD**.
- 5 Click **Table** and then add entries to the Broadcast Distribution Table (BDT).
- 6 Set other properties as needed and then click **Save**.

Note: The router will restart. For additional changes, log in again.



Enable Select to enable the network. The port block turns green when enabled.

Net Designates the BACnet network number for the port. Assign network numbers in the range from 1 to 65534.

Port Assign a unique UDP port number to each of the enabled IP networks. The default port number is 47808.

Network address translation

When using Network address translation, coordinate with the IT department to obtain a public IP address and a port exception in the firewall.

Use public address Select to enable network address translation and port forwarding.

Public address The static public IP address supplied by the IT department.

Public port The public UDP port supplied by the IT department. For security, use a port that is not in the typical range of BACnet ports.

Table

The items in Table define the Broadcast Distribution Table (BDT) for the BBMD. Enter an IP address, UDP port number, and IP subnet mask of each BBMD that is part of the internetwork.

- If none of the BBMDs are using a public IP address, the BDT entries in every BBMD are the same.
- If the BBMD uses a public IP address, the BDTs are different in every router. Each BDT will use its own private IP address, port number, and subnet mask and the public IP address, port number, and subnet mask for all of the other BBMDs on the internetwork.

To add or delete entries, do the following:

- Adding entries—Click **Add** for additional entries.
- Deleting entries—Select **sel** and click **Delete**.

Max FDT Table Entries Sets the maximum number of foreign devices that can register at one time. The value for MAX FDT Entries is 1–128.

Enable FD Service When selected, the BBMD permits foreign devices to register with the BBMD. The maximum number of devices is limited by the value in Max FDT Table Entries.

Accept Remote Configuration When selected, the BBMD will update the BDT with a table it receives from another BBMD.

Other IP routing protocols

- [BACnet IP routing on page 27](#)
- [BACnet PAD routing on page 32](#)
- [BACnet foreign device routing on page 28](#)
- [Router Core properties page on page 35](#)

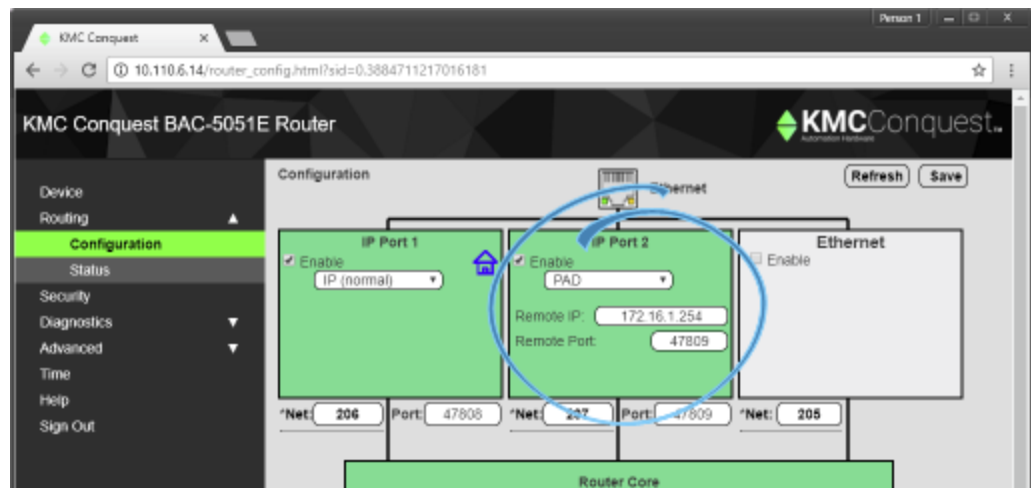
BACnet PAD routing

Either of the two IP ports can be configured for PAD (Packet Assembling and Disassembling) routing to a companion PAD router located on a different subnet. The values on this page are assigned by the BACnet system engineer.

For the log in procedure, see the topic [Initial setup on page 15](#).

- 1 Use an Internet browser to log in.
- 2 Click **Routing** and then **Configuration**.
- 3 Select **Enable** for the port.
- 4 From the list box, choose **PAD**.
- 5 Set other properties as needed and then click **Save**.

Note: The router will restart. For additional changes, log in again.



A BACnet IP PAD router is a special type of router that connects two or more BACnet network segments that are separated by at least one IP-only router. The PAD router monitors network traffic for BACnet messages addressed to other subnets and then repackages the message so that they can pass through IP routers, in effect forming a “tunnel” between the two network segments. A companion PAD router unpacks and retransmits the message on the remote BACnet network.

Enable Select to enable the network. The port block turns green when enabled.

Net Designates the BACnet network number for the port. Assign network numbers in the range from 1 to 65534.

Port Assign a unique UDP port number to each of the enabled IP networks. The default port number is 47808.

Remote IP Enter the address of the remote PAD router. If network address translation (NAT) is used between the local router and the PAD router, contact the network system administrator for the correct public IP address.

Remote Port Enter the port number of the remote PAD router. If port address translation (PAT) is used between the BAC-5051E router and the PAD or BBMD, contact the network system administrator for the correct public IP address.

Other IP routing protocols

- [BACnet Broadcast Management Device routing on page 30](#)
- [BACnet IP routing on page 27](#)
- [BACnet foreign device routing on page 28](#)
- [Router Core properties page on page 35](#)

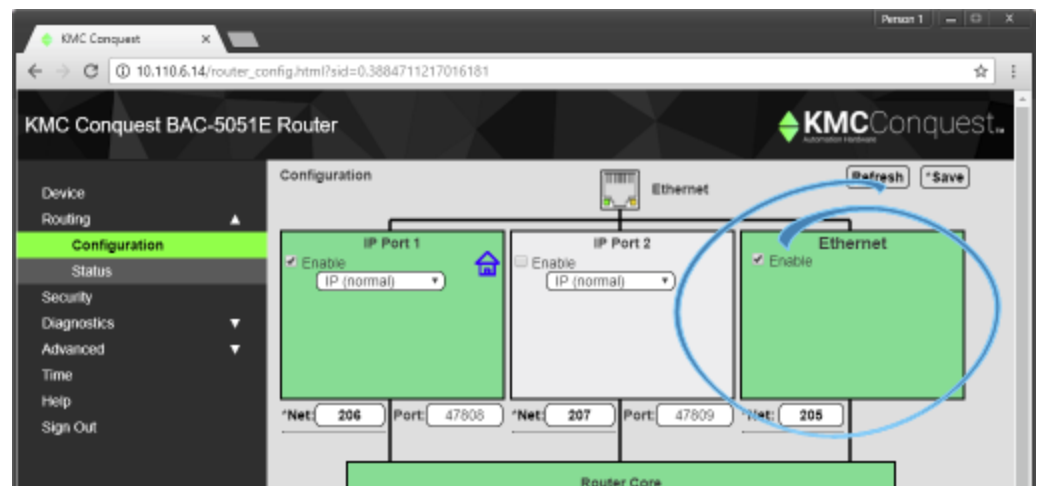
BACnet Ethernet routing

Configure the Ethernet port in this page. The values on this page are assigned by the BACnet system engineer.

For the log in procedure, see the topic [Initial setup on page 15](#).

- 1 Use an Internet browser to log in.
- 2 Click **Routing** and then **Configuration**.
- 3 Select **Enable** for the Ethernet port.
- 4 Enter the Network number and then click **Save**.

Note: The router will restart. For additional changes, log in again.



Enable Select to enable the network. The port block turns green when enabled.

Net Designates the BACnet network number for the port. Assign network numbers in the range from 1 to 65534.

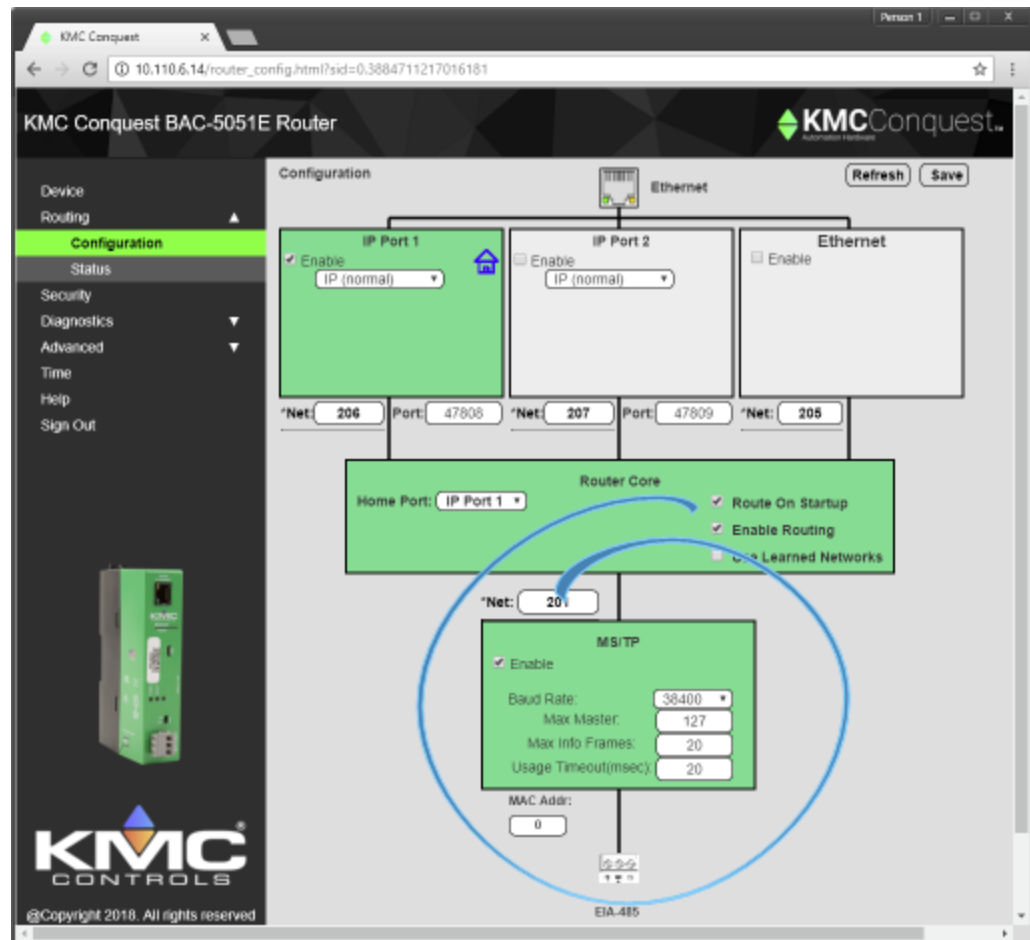
MS/TP configuration

Configure the MS/TP network in this page. The values on this page are assigned by the BACnet system engineer.

For the log in procedure, see the topic [Initial setup on page 15](#).

- 1 Use an Internet browser to log in.
- 2 Click **Routing** and then **Configuration**.
- 3 Select **Enable** for the MS/TP port.
- 4 Enter the Network number and a MAC address for the router.
- 5 Set Baud Rate. All devices on the MS/TP network must use the same Baud.
- 6 When finished, click **Save**.

Note: The router will restart. For additional changes, log in again.



Enable Select to enable the network. The port block turns green when enabled.

Net Designates the BACnet network number for the MS/TP port. Assign a network number that is in the range from 1-65534.

Baud Rate Select the baud rate from the drop down list. The Baud Rate for the router and all devices connected to the MS/TP network must use the same rate.

Max Master Set to 127 or no lower than the highest MAC address on the network. See [Device Status page on page 42](#).

Usage Timeout Sets the maximum time the router will wait on a response from a master device before passing the token. The default value is 20 milliseconds.


MAC Address The MAC (Media Access Control) address assigned to the router for the MS/TP network. This must be unique on the MS/TP network and in the range from 0–127. Typically the MAC address for a router is zero (0).

Router Core properties page

The Router Core properties are general properties that apply to all routing protocols. The properties consist of the Home Port selection and the Routing properties.

Home Port

Because the router is a BACnet device, it must be connected to one of the BACnet networks by setting the Home Port property.

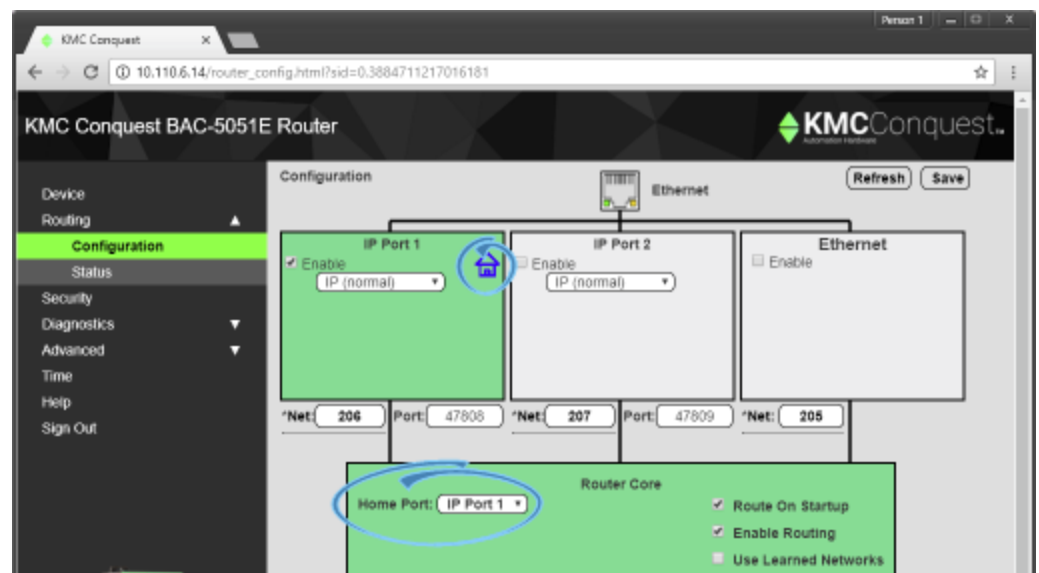
- The home port is designated on a router port by the Home Port icon .
- The home port sets the network on which the router is connected. In operator workstations, the router appears on the network designated as the home port network.
- The home port can be assigned only to an enabled network.



Caution

Using the MS/TP network reduces the APDU size and significantly increases network traffic. KMC Controls recommends that one of the IP ports or the Ethernet port is designated as the home port.

Illustration 3–1 Router Home Port



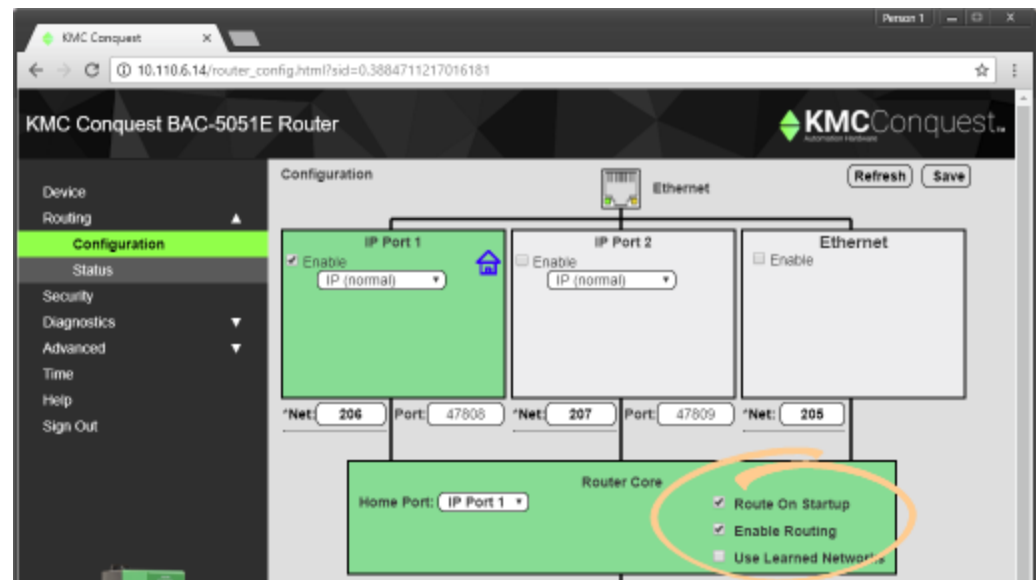
Routing properties

Route On Startup When selected, the router will immediately begin routing after a power cycle or BACnet Cold start. This includes restarting the router on the [Device properties page on page 21](#). The router will also select the Enable Routing check box during the reset or power up procedure.

Enable Routing When this check box is clear, routing on all ports is disabled but the router remains an active device on the BACnet Internetwork. The MS/TP diagnostic and Routing Status pages are still active. When routing is not enabled the background of Router Core is gray. When routing is enabled the background is green. Routing can also be enabled or disabled on the [Routing Status page on page 37](#).

Use Learned Networks When selected, the router will attempt to learn the network number being used on a port. This only works if there is at least one other router on the network that responds to a BACnet *What-Is-My-Network-Number* message. If available the router will use the learned network otherwise the router will use the configured network number.

Illustration 3-2 Routing properties



Section 4: Diagnostics and status

Topics in this section cover the diagnostic and status functions of the BAC-5051E router.

The BAC-5051E router includes several status and function pages for diagnosing problems and improving the efficiency of the connected networks.

- The topic [Routing Status page](#) applies to all connected networks.
- The topics [Device Status page](#), [MS/TP Metrics page](#), and [Token Use page](#) apply to the MS/TP network.

Topics in this section

Routing Status page	37
Device Status page	42
Token Use page	44
MS/TP Metrics page	46
MS/TP Capture page	49

Routing Status page

The Routing Status page contains a network status list and command buttons to update the display and networks. The page consists of three major parts.

- Send commands to the router with the [Route Status buttons](#) on page 38.
- View the status of networks in the [Route Status list](#) on page 39.
- Clear selected networks by [Purging the Route Status list](#) on page 41.

Enable Routing When this check box is clear, routing on all ports is disabled but the router remains an active device on the BACnet internetwork. The MS/TP diagnostic and Routing Status pages are still active. Routing can also be enabled or disabled on the [Router Core properties page](#) on page 35.

Note: Enable Routing will not remain selected after a restart if Route On Startup is not selected on the [Router Core properties page](#) on page 35.

Refresh Click to refresh the Route Status list. To automatically refresh the list every 10 seconds, select the **Auto Refresh** check box.

Illustration 4-1 Routing Status page

KMC Conquest BAC-5051E Router

Routing Status

Enable Routing ☒ Auto Refresh ☐ Refresh

Send I-Am-Router-To-Network Clear Direct Network Status Purge Remote Networks

Send Who-Is-Router-To-Network Clear Remote Network Status Send Sequence (Purge, Clear, I-Am-Router-To-Network)

Legend	Status	Net		Next Router		Time	Idle Time	
		Destination/Discovered	N/A	Net	Addr			
①	Sole Master	2500	N/A	Directly Connected	Not Applicable	00:05:21	00:00:00	Select Routes
●	Network Number M	11891	12891	Directly Connected	Not Applicable	00:00:39	00:00:00	Select Routes
●	Active	205	N/A	11891	10.110.2.204.47801	00:05:24	00:04:42	Select
●	Active	1104	N/A	11891	10.110.2.204.47801	00:04:42	00:04:42	Select
●	Active	1106	N/A	11891	10.110.2.206.47801	00:04:42	00:04:42	Select
●	Active	1107	N/A	11891	10.110.2.207.47801	00:04:42	00:04:42	Select
●	Active	2000	N/A	11891	10.110.6.13.47801	00:05:11	00:04:42	Select
●	Active	3000	N/A	11891	10.110.6.12.47801	00:05:18	00:04:42	Select
●	Active	18895	N/A	11891	10.110.6.13.47801	00:04:42	00:04:42	Select

of Networks Displayed 9 (Actual 9) Purge

Route Status buttons

The Route Status buttons are useful for diagnosing routing and network problems.

Send I-Am-Router-To-Network Broadcasts to all networks that the router is on the network. This can trigger internetwork wide updates.

Clear Direct Network Status Forces the status of all direct networks to Active. If a network problem continues after clearing the direct networks, the networks with problems will return to a status other than Active.

Purge Remote Networks Removes all remote routes from the network table.

Send Who-Is-Router-to-Network Initiates a query to other routers that results in the discovery of other networks. Other routers respond with a BACnet I-Am-Router-To-Network message.

Clear Remote Networks Forces the status of all remote networks to Active. If a problem continues with a remote network, it will return to a status other than Active.

Send Sequence Sequentially broadcasts the three commands Purge, Clear, and Send I-Am-Router-To-Network.

Route Status list

The Routing Status list is a diagnostic display of all networks known to the router. Both direct and remote networks are listed.

- Direct (or local) networks are connected directly to the router.
- Remote networks are on the other side of one or more remote routers. The path to a remote network always includes at least one directly connected network.

Each of the columns lists information about local or remote networks.

Tip: If a directly connected network is shown to have a problem, the remote networks that connect to it will also show problems. Correct directly connected network problems before troubleshooting remote network problems.

Status The status of each network known to the router. See the table [Route status conditions](#) for a description of each condition.

Net The columns under Net will change modes depending on the setting of Use Learned Networks on the [Routing Status page on page 37](#).

Destination The Destination is always the network number the router is using.

- If Use Learned Networks is enabled, this is the learned network number.
- If Use Learned Networks is not enabled, this is the network number entered for the port on the Configuration page.

Configured (Use Learned Networks enabled) The network number that is configured for the port on the Configuration page. If this number is different than the Destination network, the network number is in red.

Discovered (Use Learned Networks not enabled) The learned network number at a port. If this network number is different than the network number on the Configuration page the number is in red and the status will be other than Active. Other networks are listed as N/A.

Next Router A list of each network connected to the router's ports that will be used to route a message to the next router.

- **Network** The BACnet network number to the next router.
- **Address** The MAC address of the next router.

Time The elapsed time since the status update.

Idle Time The elapsed time since the last traffic was passed to the network by the router.

Table 4-1 Route status conditions












Status	Icon	Description	Action
Active		The network is functioning correctly and capable of passing traffic.	None required.
Busy		The amount of network traffic is high enough that no new traffic can be accepted.	A temporary condition that does not require intervention.
Down Gone		The network is not functional and is rejecting traffic.	Most likely will require manual intervention. Conditions that cause a network to be down may include either LAN or BACnet router problems.
No Status		The router is searching for the network.	Usually a temporary condition. Does not require intervention.
Duplicated Network		Two networks are using the same network number. A router cannot pass traffic on a duplicated network.	Usually requires intervention to locate and change the duplicated network number. Multiple duplicated networks are usually an indication of a network loop.
Duplicate MAC		The router has detected two MS/TP device using the same MAC address. Traffic is not routed.	Change the MST/TP MAC address in either the router or the device that contains the duplicated number.
Sole Master		The router is not detecting any master MS/TP devices on the local network. Slave devices however, may be present.	Requires corrective action if master devices are known to be connected to the local MS/TP network.

Table 4-1 Route status conditions (continued)

Status	Icon	Description	Action
BBMD: Unknown		Indicates the router is receiving BBMD traffic from an unknown BBMD. This does not stop traffic from routing.	If appropriate, add the unknown BBMD to the local BDT. A possible cause of unknown traffic is an address issue because of network address translation.
BBMD: Multiple		Indicates the router has detected another BBMD in the same subnet as itself. Traffic is not routed.	Remove a BBMD from the network.
Foreign Device NAK		A foreign device is preventing the router's request to distribute messages. Initially, this will not block traffic. However, as additional registration requests are received, attempts speed up until traffic is stopped.	The remote device server cannot register additional devices. Increase the value of Max FDT Entries in the remote server or register with a different server.
Mismatched Network Number		The learned network does not match the configured network.	Select Use Learned Networks on the Configuration page or change the router's network number.

Purging the Route Status list

To clear old data from the Route list, select a network and then click **Purge**.

- Choose **Select** to remove a specific remote network from the table.
- Choose **Select Routes** to remove all of the remote routes related to a directly connected network.

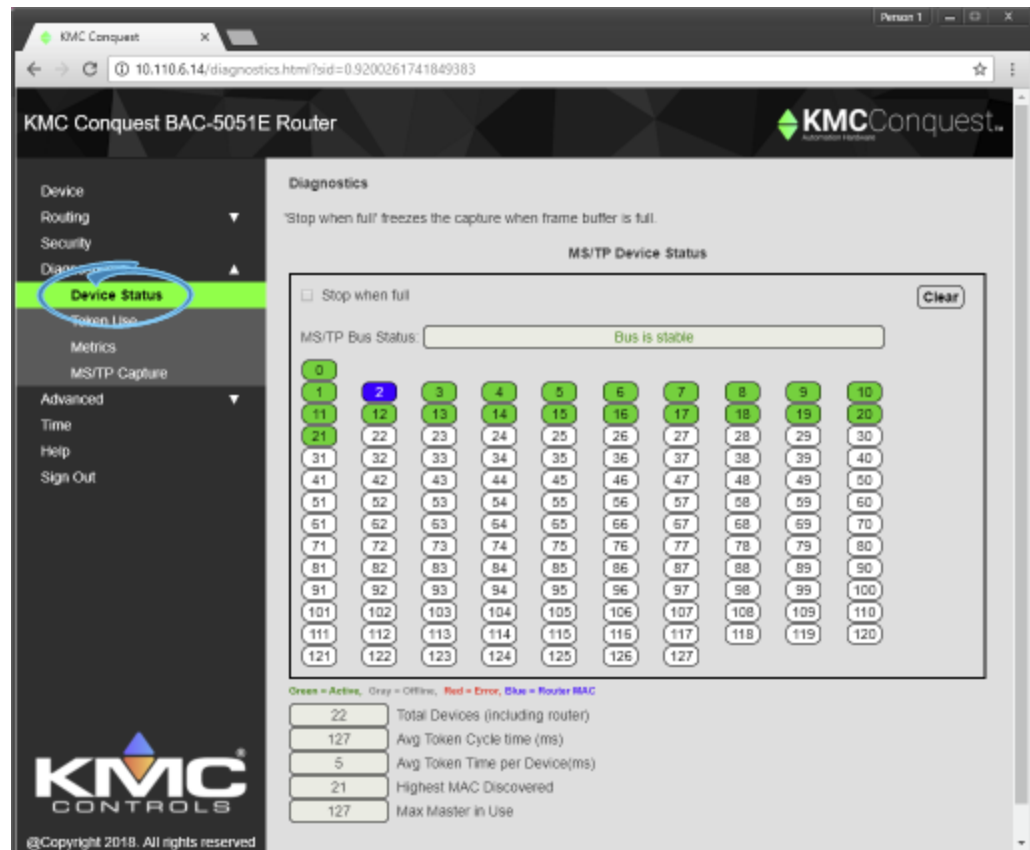
The selected network or networks are then cleared from the list. As the router detects the actual networks in use, they are added back to the list.

Device Status page

The Diagnostics Status page is a color coded status display and a list of metrics for the MS/TP network. Background color indicates the status of each MAC address.

Note: When the Diagnostics page opens, the router shows active network devices in green. After clicking Refresh, any device that was active but has stopped communicating within the last few seconds changes from green to gray.

See the topic [Setting up routing on page 27](#)



Refresh Updates the window with the latest network status.

Clear Deletes all current values in the MS/TP Status display and Metrics list.

Table 4-2 Device status

Color	Icon	Description
White		No device is assigned to this MAC address.
Gray		A device was active with this MAC address but is no longer online.
Blue		The MAC address assigned to the router.
Green		The MAC address is assigned to an active device.
Red		Two devices are using the same MAC address.

If you encounter difficulty, click Refresh about every ten seconds to see how the Device Status changes.

- If a MAC is red, start disconnecting devices from the network and click Refresh as you disconnect until the red goes away. This will help find the device that has the same MAC address as the router.
- Gaps in the MAC addresses. MAC address gaps make the network less efficient because devices will continually search for devices in the gap. Small gaps between the router and the first device is okay, but you should try to eliminate gaps between devices by changing MAC addresses.
- Gray can indicate several issues. This means communications at or near the gray MAC address is intermittent. This can be caused by noise, loose wiring, and duplicate MAC addresses. It could mean the end-of-line termination is not set properly. It could mean a device has bad power and is resetting often. The problem is usually associated with the first device that is shown gray.
- Known devices are not green. This is usually caused by bad wiring, bad grounding, or not having the same baud-rate for the router and devices. To isolate the problem, start splitting the network by physically disconnecting wires until devices begin communicating.

The network metrics are useful for evaluating overall network performance.

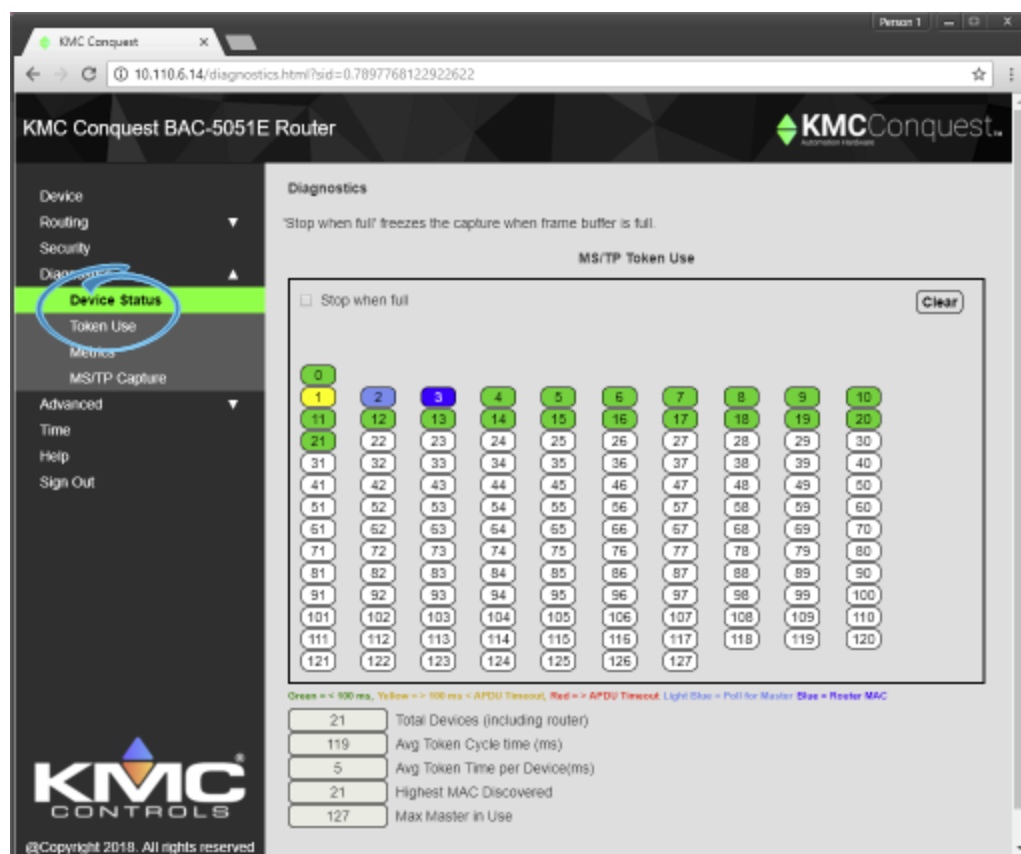
Network metrics

Metric	Description
Total Devices	Number of devices on the network including the router
AVG Token Cycle time	The time for the token pass to all controllers and return.
AVG Token Time per device	Typically 10 ms or less.
Last Master MAC Address	The highest MAC found by the router.

Token Use page

The Token Use page is a dynamic display of token passing on the network. The colors of each device indicate the speed of token passing.

Illustration 4-2 MS/TP Token Use page



Token use by color

Color	Description	Condition	Action
Blue	The MAC address assigned to the router.	Light traffic. Will change to green or yellow if traffic increases.	None required.
Green	Token passed in less than 100 ms.	Normal token passing.	None required.
Yellow	Token passed in more than 100 ms but less than the value of APDU Timeout.	Token passing is slow but the device is still functional.	Indicates a potential bottleneck. No action if device returns to green.
Red	APDU Timeout	The device is retaining the token too long.	A bottleneck in network traffic. Typical cause is excessive or continuous polling for data in other controllers.
Light Blue	Poll for Master	A device is polling for a master device.	This is normal if there are gaps in the MAC addresses.

Stop when full When selected full Stop when full freezes the capture when the frame buffer is full.

Clear Removes data from the window and refreshes it with the current network status.

The network metrics are useful for evaluating overall network performance.

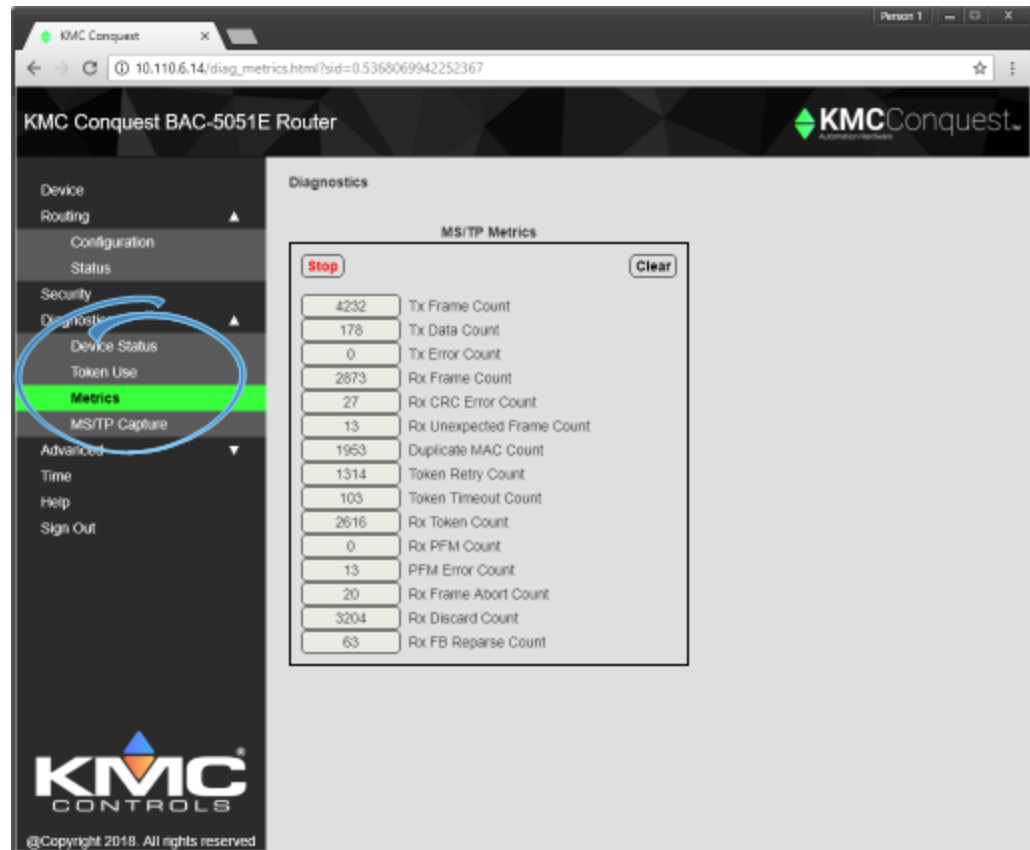
Network metrics

Metric	Description
Total Devices	Number of devices on the network including the router
AVG Token Cycle time	The time for the token pass to all controllers and return.
AVG Token Time per device	Typically 10 ms or less.
Last Master MAC Address	The highest MAC found by the router.

MS/TP Metrics page

The network metrics are useful for evaluating network performance and troubleshooting.

Illustration 4-3 Diagnostic metrics



Interpreting the diagnostic data

Even the best designed and installed network will have minor or infrequent communications issues. The following tips will help determine the significance of the network metric as well as suggestions for improvement.

Tx and Rx Frame Counts The actual number of frame counts depends on the baud rate and number of network devices. The more connected devices, the slower the frame counts grow. Unless the relative difference between the two counts is greater than 10%, the network is generally okay. The reason is the router sends more messages than it receives is primarily because of the small gap between its own MAC address and the next device.

Rx Frame Count greater than Tx Frame Count The greater the difference, the higher the probability of the following conditions.

- One or more devices somewhere in BACnet internetwork is sending a lot of broadcast messages.
- One or more devices on the router's MS/TP network is sending a lot of network unicast messages.

Typically a device is trying to find other devices that do not exist or are not communicating properly and are repeatedly sending BACnet WHO-IS messages. Usually this is caused by a Control Basic program or a Notification Class object recipient list referring to a device that does not exist.

Rx Frame Count much less than Tx Count Will probably also see a device in a gray offline status. It usually means devices are not communicating reliably either because of noise or they because they are inundated with network messages and cannot keep up.

Tx Data Count This is the number of messages that contain actual point data. Most other messages are just passing the token. In the previous example, the Data Count is only 0.1% of the Tx Frame Count which just means the network is passing a small number of points or trends. If this ratio is more than 30%, it may indicate a problem because it is likely that one or more devices or workstation are gathering more data than is really needed. This can mean the network will drop important messages.

Token Retry or Token Timeout This usually indicates a problem with the device next to the router in the MAC chain. The cause could be noise specific to the device or general network noise. This is not a problem unless this count is more than ten counts in a 24-hour period.

Rx PFM Count This indicates a problem between the router and the device just before it in the MAC chain, usually the one at the end. A few counts in a 24-hour period is not unusual.

All other metrics Other metrics typically do not indicate a problem unless a value exceeds ten counts in a 24-hour period. If you encounter issues, see the topic [If you encounter difficulty on page 12](#) to contact technical support.

Description of the Metrics page

The following table describe each of the properties displayed on the MS/TP Metrics page.

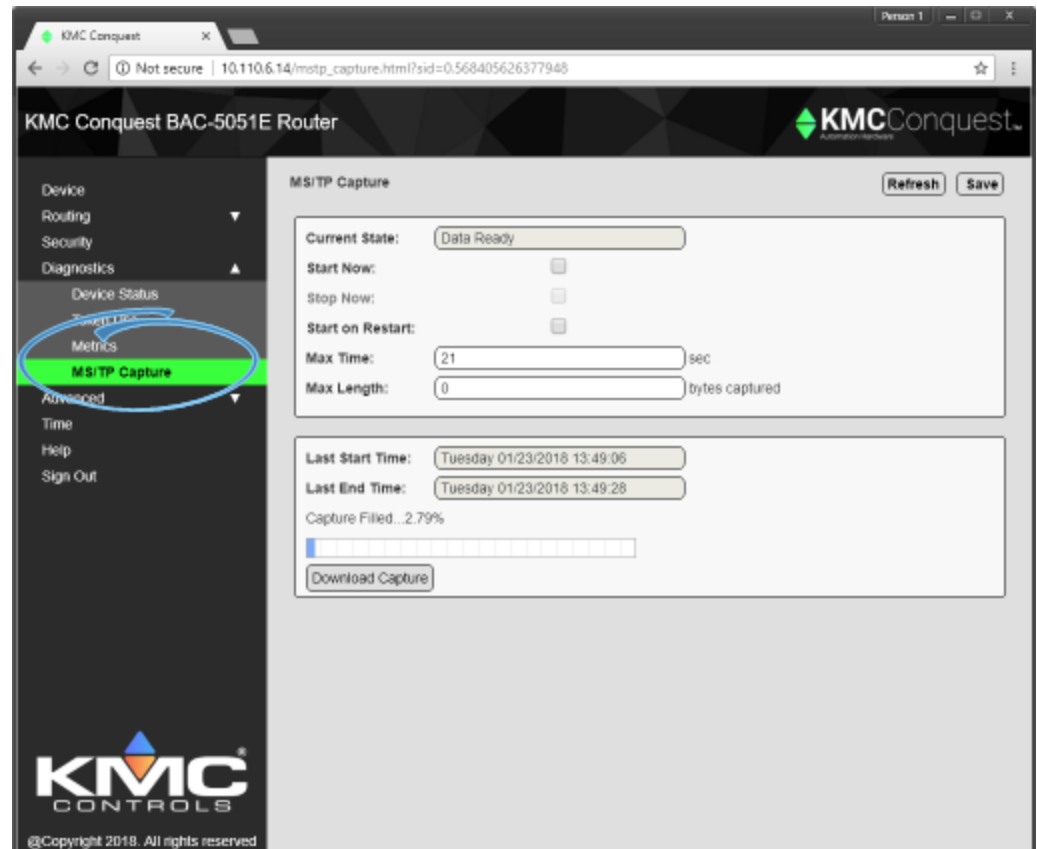
Table 4-3 Diagnostic metrics

Metric	Description
TX Frame Count	The number of transmissions sent by the router.
Tx Data Count	The number of transmissions sent by the router that included data.
Tx Error Count	The number of transmissions sent by the router that were in error.
Rx Frame Count	The number of frames received by the router.
Rx CRC Error Count	The number of frames intended for the route with a bad CRC (Cyclic Redundancy Check).
Rx Unexpected Frame Count	The number of frames with an unexpected error that were received by the router.
Duplicate MAC Count	The number of times the router received a message from another device with the same MAC.
Token Retry Count	The number of times the router had to retry passing the token.
Token Timeout Count	Number of times the token passing from the router to the next device failed.
RX Token Count	Number of times the router received the token.
RX PFM Count	Number of times the router saw a poll-for-master message for its own MAC.
PFM Error Count	The number of times the router was expecting a poll-for-master message and did not receive it.
RX Frame Abort Count	The number of frames that were terminated because of a timeout error.
RX Discard Count	The number of frames rejected because of mismatched timing or preambles.
RX FB Reparse Count	The number of times more than one frame was found inside of the frame buffer.

MS/TP Capture page

Use the MS/TP Capture page to monitor and save the BACnet traffic on the MS/TP network. The captured traffic can then be saved in a standard `.pcap` (Packet CAPture) file format. Once saved, analyze the data with Wireshark or any other network analyzing program that uses `.pcap` files. The router must be connected directly to the monitored MS/TP network. This can be from either an existing router or a router temporarily connected as a service tool.

Illustration 4-4 MS/TP Capture page



Current State Shows the status of the capture. The status can be any of the following conditions.

- Idle
- Starting Capture
- Capturing
- Ending Capture
- Data Ready
- Error

Start Now Select this check box and then click **Save** to start a capture. The capture will continue until the length of time set in Max Time, the amount of data set in Max Length, or the maximum buffer size is reached.

Stop Now Select this check box and then click **Save** to end a capture. The data can then be saved by clicking **Download Capture**.

Start on Restart Select this check box and then click **Save**. The router will restart and capture MS/TP traffic until the Max Time or Max Length is reached or the buffer is full. The maximum amount of space to store captured data is 1 gigabyte. The router will capture MS/TP traffic after every restart until Start on Restart is cleared.

Max Time Enter the length of time, in seconds, for a timed capture.

Max Length The amount of data, in bytes, to capture.

Last Start Time For information only. This is the time—as maintained by the clock in the router—when the last capture started.

Last End Time For information only. This is the time—as maintained by the clock in the router—when the last capture ended.

Capture Filled The percentage of available buffer space to store a capture. The maximum amount of space to store captured data is 1 gigabyte.

Download Capture When this link is blue, captured data is ready to save to the computer on which the browser is running. Data is saved in the file format `.pcap` (Packet CAPture). The first capture is saved as `Capture.pcap`. Additional captures are saved with a number added to the file name (`Capture (1).pcap`, `Capture (2).pcap`, etc.). Files are saved in the `downloads` folder for the current Windows user.

Section 5: Advanced features

This section covers features for updating and backing up the BAC-5051E router.

Features in the Advanced group are for updating the firmware and backing up the router configuration.

- Recovering the IP address** Discover an unknown network IP address.
- Firmware updates**—From time to time, KMC Controls issues updates to the firmware for the router. The updates can be added directly to the router from the browser pages.
- Configure from file**—Configuration properties for the router can be saved in a JSON (JavaScript Object Notation) file. The file can then be used as a backup file or to configure other routers with similar properties.

Topics in this section

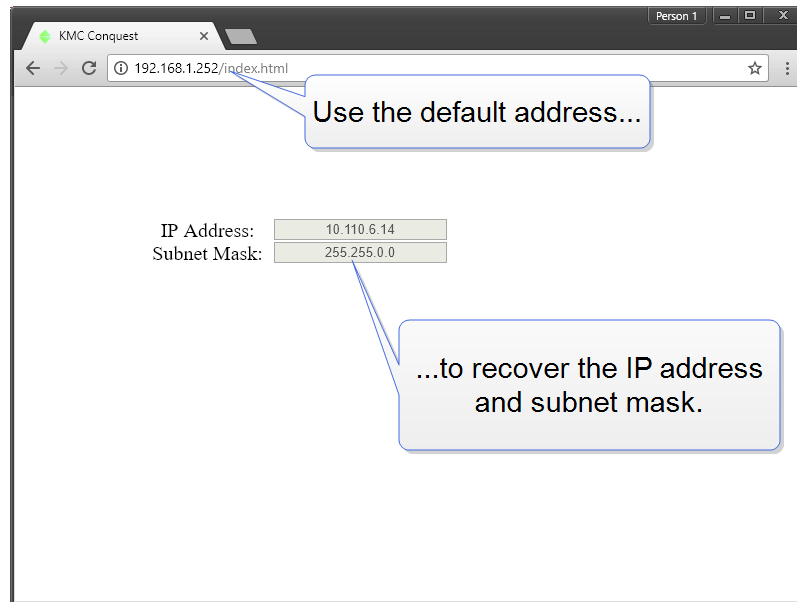
Recovering the network address	51
Updating the firmware	53
Configure from a file	54
VAV balancing and configuration	55

Recovering the network address

If the network address of the router is lost or unknown, the router will respond to the default IP address for the first 20 seconds after power is applied.

- 1 Disconnect the router from the LAN and connect the router as described in the topic [Initial setup on page 15](#).
- 2 Unplug the router from the power source.
- 3 On the computer, open a browser window and enter the default address of 192.168.1.252.
- 4 Reconnect the router from the power source and immediately attempt to connect with the browser. The browser will respond with the router's IP address and subnet mask.

- 5 Once the address is known, connect the router to the correct IP subnet for normal operation or router configuration.



Updating the firmware

The router firmware can be updated from the Firmware page in the Advanced group.

Note: The router firmware can also be updated with KMC Connect, TotalControl, or the Firmware Upgrade Tool. For instructions, see the help and other documentation for those programs.

Illustration 5–1 Firmware update page



To update the firmware, do the following:

- 1 Download the new firmware from the KMC partner portal. The file is a self extracting executable file that will install the firmware in the correct location.
- 2 Run the downloaded file. This will place a .zip file in the folder at `C:\ProgramData\KMC Controls\Firmware Upgrade Manager\BACnet Family\BAC-5051E`. Do not unzip this file.
- 3 Use an Internet browser to log in to the router.
- 4 From the **Advanced** group, choose **Firmware**.
- 5 Click **Choose File** and browse to the following location: `C:\ProgramData\KMC Controls\Firmware Upgrade Manager\BACnet Family\BAC-5051E`.
- 6 Locate and open the folder with the correct version of firmware and then select the .zip file.
- 7 When the Proceed with Download dialog opens, click **OK**.
- 8 When the download is finished, click **Commit**. The router will restart.

Configure from a file

Configuration properties for the BAC-5051E router can be saved in a configuration file. The configuration file can then be used as a backup file or to configure other routers with similar properties.

- 1 Use an Internet browser to log in.
- 2 From the **Advanced** group, click **Choose File**.
- 3 Browse to the file location, choose the file, and then click **Open**.
- 4 When the Overwrite Router Configuration dialog opens, click **OK** to precede.

Choose File Browse to the location and choose the configuration file.

Save Configuration Saves the router configuration in the file `config_5051E.json`. The file type is JSON (Java Script Object Notation) and it is saved in the Windows current user's downloads folder.

Illustration 5-2 Configure from File page



VAV balancing and configuration

Topics in this section are for control technicians or engineers who will be balancing the airflow in BAC-8000 or BAC-9000 series controllers. The BAC-5051E includes the following features for balancing, configuring, and commanding airflow in a VAV controller.

- [VAV balancing on page 55](#)
- [Configuring VAV setpoints on page 56](#)
- [Commanding and monitoring airflow on page 57](#)

VAV balancing

The airflow balancing procedure described in this topic requires the following items.

- A flow hood or other accurate method to measure airflow.
- The engineering design specifications for the minimum and maximum airflow setpoints.
- A user name and password with permission to the VAV balancing feature in the BAC-5051E.

Note: If the VAV unit is a heat only or cooling only unit, the airflow setpoints for the unused mode must be set within the range of the mode in use. Failure to set the unused setpoints correctly will result in unpredictable or erroneous air balancing settings.

Note: Starting the balancing procedure erases all previous airflow correction factors. The airflow readings displayed on the VAV balancing page are the actual uncorrected airflow readings as measured by the controller

- 1 Use an Internet browser to log in.
- 2 From the **Advanced** group click **Balancing**.
- 3 Enter a range of device instance values for the VAV units to be balanced.
- 4 Click **Discover**. Up to 50 devices will be added to the list.
- 5 Select a VAV unit from list of discovered units. The background of the selected unit changes to yellow.
- 6 At the bottom of the page click the **Balance** tab.
- 7 Click **Start Balancing**. The controller commands the VAV controller to position the damper for maximum airflow.
- 8 Wait for the Actual Airflow value to stabilize.
- 9 With a flow hood, measure and note the actual airflow.
- 10 Enter the measured airflow in the **Measured Max** textbox. The controller then commands the VAV controller to position the damper for minimum airflow.
- 11 Again, wait for the Actual Airflow value to stabilize.
- 12 With a flow hood, measure and note the actual airflow.

- 13 Enter the measured airflow in the **Measured Min** textbox. The program in the controller calculates new airflow constants and returns the VAV controller to normal operation.

Note: For dual-duct VAV systems, both the primary and secondary airflows are displayed by the application.



Configuring VAV setpoints

Airflow setpoints in BAC-8000 or BAC-9000 series controllers can be change from the Configure tab.

- 1 Log in and discover the VAV units as described in the steps 1-5 in [VAV balancing](#).
- 2 At the bottom of the page click the **Configure** tab.

The values shown are the actual values in the controllers. The values for Dual Minimum Flow and Secondary K Factor are active only if a dual-duct VAV controller is selected.

3 Make changes as needed and click Save when finished.



Commanding and monitoring airflow

Command the airflow to a specific level to make adjustments or measurements that require a steady airflow.

- 1 Log in and discover the VAV units as described in the steps 1-5 in [VAV balancing](#).
- 2 At the bottom of the page click the **Command** tab.
- 3 Enter an airflow or damper position value.
- 4 Click **Start Commanding**.
- 5 When finished click **Stop Commanding**.



Index

2

24 volt power 9

A

access level 24

accessories 7

adding users 24

address

network gateway 21

of router 21

public IP 30

address unknown 51

advanced features 51

configure from file 54

firmware updates 53

B

backup configuration 54

balancing 55

baud 5, 34

BBMD routing 30

BDT 30

broadcast distribution table 30

C

capture, MS/TP diagnostics 49

configuration

for network 15

from file 54

home port 35

contact information 12

D

Daylight Saving Time 22

default

device instance 21

gateway address 15

IP address 15

subnet mask 15

device

configuration 21

instance 21

name 21

status 42

diagnostics

device status 42

metrics 46

MS/TP capture 49

token use 44

dimensions 7

DIN rail mounting 8

DST 22

E

enable routing 35

end-of-line switches 8

environmental limits 6

Ethernet routing 33

F

file types

JSON 54

PCAP 49

firewall 8

firmware updates 53

FLASH updates 53

foreign device routing 28

G

gateway

configuring 15

default address 15

gateway address 21

H

home port 35

I

initial setup 15

IP address

configuring 15

default 15

Device window 21

recovering 51

IP routing 27

J

JSON file 54

L

learned networks 35

M

MAC

MS/TP 34

of the router 21

maintenance 12

Max Master 34

metrics 42, 46

mounting 8

MS/TP

- baud 34
- diagnostics capture 49
- MAC 34
- Max Master 34
- metrics 46
- routing 34
- token use diagnostic 44
- wiring 8

N

- name of router 21
- network
 - address 21
 - gateway 21
 - termination 8
 - unknown address 51
 - wiring 8

P

- PAD routing 32
- passwords 24
- PCAP file 49
- power
 - 24 volt 9
 - from transformer 9
 - from USB 9
- power specifications 6
- public IP address 30
- purge routes 41

R

- recovering IP address 51
- regulatory specifications 6
- replacement parts 7
- Reset Session Timer 26
- restart 21
- route on startup 35
- router core 35
- routing 27
 - BACnet IP 27
 - BACnet PAD 32
 - BBMD routing 30
 - enabled 35
 - Ethernet 33
 - foreign device 28
 - on startup 35
 - status 37

S

- security 24
- service tool 13

- session timeout 26
- setting time 22
- setup 15
- single cable connection
 - as a service tool 13
 - for configuration 11
- SNTP server 22
- specifications
 - baud 5
 - envionmental 6
 - ethernet 5
 - MS/TP 5
 - power 6
 - regulatory 6
 - timekeeping 7
 - weight 6
- status
 - device 42
 - routing 37
- subnet mask
 - configuring 15
 - default 15
- surface mounting 8

T

- table, broadcast distribution 30
- technician's service tool 13
- telephone number 12
- time
 - service 22
 - setting 22
 - zones 22
- Time page 22
- timekeeping specifications 7
- timeout 26
- token use 44
- transformer wiring 9
- troubleshooting 42
 - BACnet networks 37

U

- unknown address 51
- updating firmware 53
- USB
 - power 9
 - service tool connection 13
 - single cable connection 11
- UTC time 22

V

- VAV balancing 55

W

weight 6

wiring

connecting power 9

MS/TP network 8